

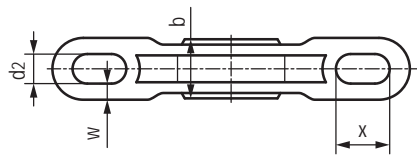
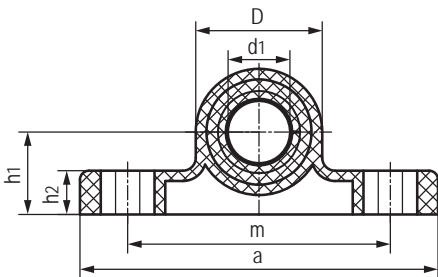
### GBB-ALG基座关节轴承 Pillow block spherical bearings



#### 产品特性 Product features

- 耐磨塑料球体内孔安装 ALG高速滑动轴承
  - 保持器采用高强度材料M163制成
  - 最高线速度可达1m/s
  - 干运行、免维护
  - 高尺寸稳定性
  - 补偿中心误差
  - 重量轻、易安装
- Anti-wear plastic ball with high speed sliding bushing ALG
  - Housing made of high strength material M163
  - High speed up to 1m/s
  - Maintenance-free dry operation
  - High dimensional stability
  - Compensation of misalignment errors
  - Very light, easy installation

#### 标准规格 Standard specifications



产品编码 Part No.:

GBB-ALG-16

内径 Inner diameter

衬套 Bushings

产品编码 Part No.	d <sub>1</sub> E10 [mm]	d <sub>2</sub> [mm]	h <sub>1</sub> [mm]	h <sub>2</sub> [mm]	D [mm]	b [mm]	a [mm]	m [mm]	x [mm]	w [mm]	最大静态抗拉强度 Max. axial static tensile strength		最大静态抗压 强度 Max. static compressive strength [N]	纵向孔最大 扭矩 Max. tightening torque for longitudinal holes [Nm]	重量 Weight [g]
											短期 Short-term [N]	长期 Long- term [N]			
GBB-ALG-16	16	6.6	18	10.5	SD31.7	13	86	60	12	4.2	3000	1500	1800	4.5	41.4
GBB-ALG-20	20	9	22	13	SD38	16	98	68	14	4.5	4700	2350	1300	10.5	56.3
GBB-ALG-25	25	9	27	16	SD46.7	20	124	86	17	6.5	6600	3300	1600	10.5	79.0
GBB-ALG-30	30	11	32	17	SD53.7	22	139	96	20	7	8100	4050	2100	21.5	121.7