

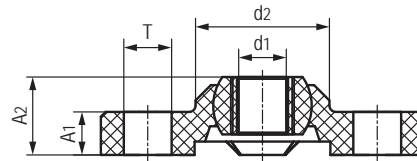
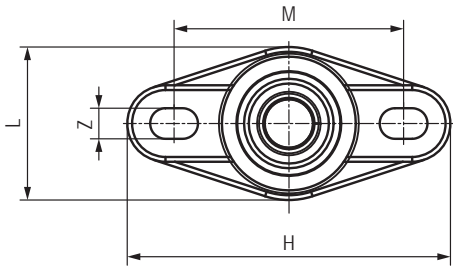
### GFB-ALG法兰关节轴承 Flange spherical bearings



#### 产品特性 Product features

- 耐磨塑料球体内孔安装 ALG高速滑动轴承
  - 保持器采用高强度材料M163制成
  - 最高线速度可达1m/s
  - 干运行、免维护
  - 高尺寸稳定性
  - 补偿中心误差
  - 重量轻、易安装
- Anti-wear plastic ball with high speed sliding bushing ALG
  - Housing made of high strength material M163
  - High speed up to 1m/s
  - Maintenance-free dry operation
  - High dimensional stability
  - Compensation of misalignment errors
  - Very light, easy installation

#### 标准规格 Standard specifications



产品编码 Part No.:

GFB-ALG-06

内径 Inner diameter  
衬套 Bushings

产品编码 Part No.	d <sub>1</sub> E10 [mm]	d <sub>2</sub> [mm]	A <sub>1</sub> [mm]	A <sub>2</sub> [mm]	T [mm]	L [mm]	H [mm]	Z [mm]	M [mm]	最大轴向静载荷 Max. axial static load		最大径向静态负荷 Max. radial static load		最大静态转 矩-孔 Max. tight-ning torque -Holes [Nm]	最大调 节角度 Max. adjust angle	重量 [g]
										短期 Short-term [N]	长期 Long-term [N]	短期 Short-term [N]	长期 Long-term [N]			
GFB-ALG-06	6	14	4.5	8.5	5	16	33.8	3.2	24	500	250	800	400	0.6	25°	2.3
GFB-ALG-08	8	18	5.5	10.5	6.5	22	44.2	4.3	31	700	350	1100	550	1.3	25°	4.5
GFB-ALG-10	10	22	6.5	12	8	26	52	5.3	36	850	425	2000	1000	2.5	25°	7.3
GFB-ALG-12	12	25	7	13	8	31	56.7	5.3	41	1100	550	2200	1100	2.5	21°	9.6
GFB-ALG-15	15	29.8	8.5	15.5	10	36	68.6	6.4	50	1300	650	2400	1200	4.5	20°	16.2
GFB-ALG-16	16	32	10	17.5	10.1	38	72.6	6.4	53	1400	700	2800	1400	4.5	27°	19.1
GFB-ALG-20	20	40	11	20	12.5	47	89	8.4	65	1800	900	5500	2750	10.5	19°	35.1
GFB-ALG-25	25	48.5	14	25	12.6	58.5	101	8.4	75	3000	1500	6000	3000	10.5	15°	62.2
GFB-ALG-30	30	55	15	26	16	65	118	10.5	87.5	3500	1750	6500	3250	21.5	14°	83.8