



HIGH SPEED SLIDING BEARINGS

高速滑动轴承

CSB-ALB[®]

Polymer-tech Solutions™



CSB-ALB[®] 高速滑动轴承

CSB-ALB[®] HIGH SPEED SLIDING BEARINGS

高精度

High Precision

高速运行

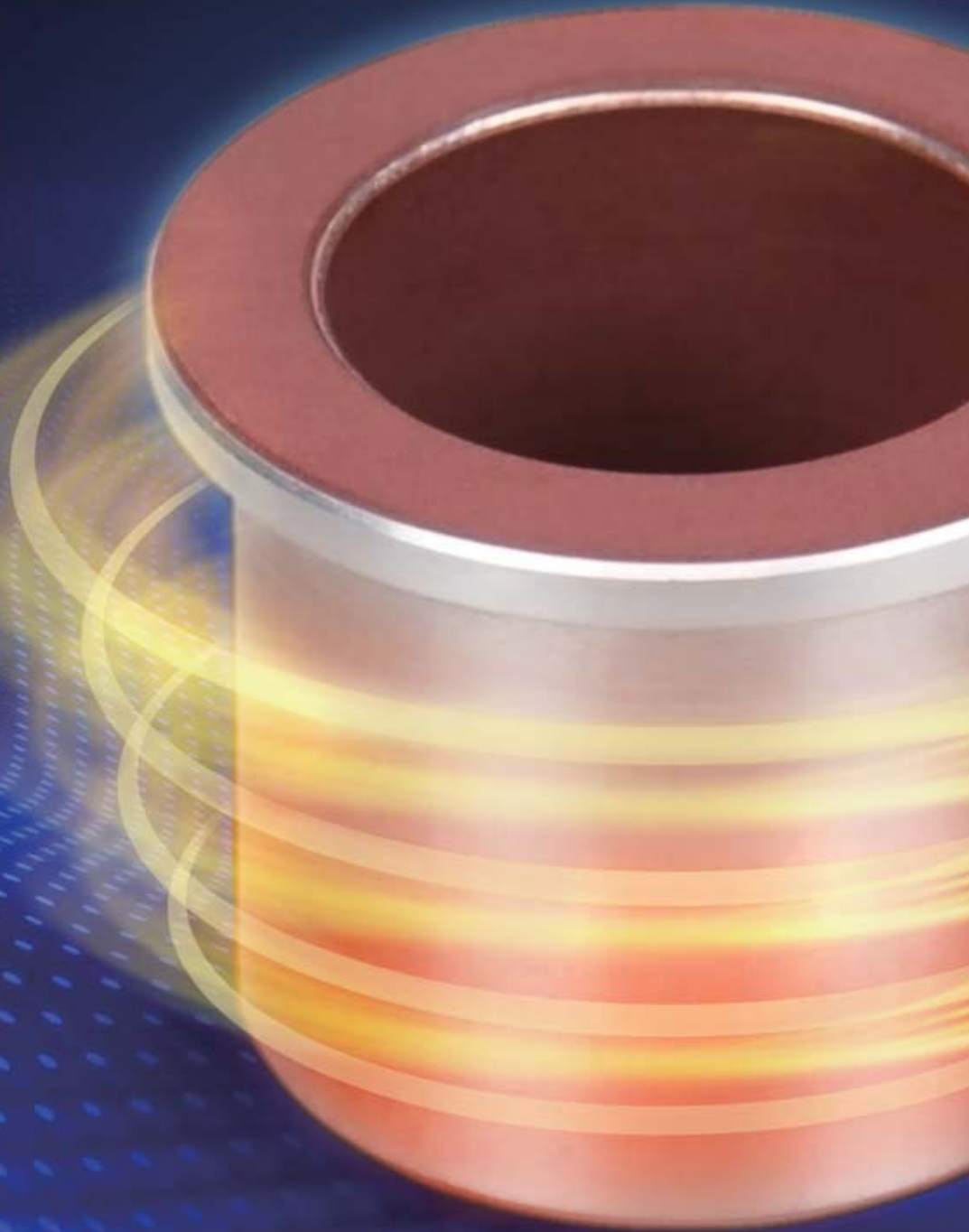
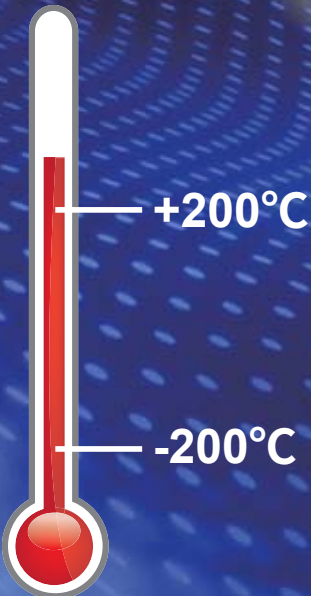
High Speed Operation

耐高温

High Temperature Resistance

静音运行

Noise-free Operation



TEFPLAS™ B

标准滑动层材料，综合高承载与耐磨特性，适用于硬度HRC35以上硬轴。

TEFPLAS™ B is a standard sliding layer material. It combines high load bearing and wear resistance performance, suitable for hard shaft HRC35 or higher.



TEFPLAS™ G

极好的耐磨性能，适用于硬轴、不锈钢轴或铝轴。

TEFPLAS™ G has excellent wear resistance, suitable for hard shaft, stainless steel shaft or aluminum shaft.

TEFPLAS™ E

符合FDA食品接触安全材料，适用于不锈钢轴或铝轴。

FDA food contact safety materials, suitable for stainless steel shaft or aluminum shaft.



TEFPLAS™ 滑动层材料

TEFPLAS™ Sliding layer materials



TEFPLAS™ 滑动层材料性能参数

TEFPLAS™ Sliding Layer Materials Performance Parameter

材料性能 Material properties		TEFPLAS™ B	TEFPLAS™ G	TEFPLAS™ E
摩擦系数 Dry friction coefficient		0.10-0.25	0.10-0.20	0.05-0.18
最大静载荷 Max. static load MPa		20	16	12
最大动载荷 Max. dynamic load MPa		10	8	6
极限PV值 Max. PV N/mm ² x m/s		0.7	0.6	0.4
最高干运行速度 (m/s) Max. Speed ,Dry running	连续运行 Continuous	1.5	1.0	1.0
	间断运行 Intermittent	4.0	3.0	2.0
运行温度* Operation temperature °C		± 200	± 200	± 200

*极端高温下运行需要考虑加大配合间隙消除轴与轴承高温膨胀引起的卡滞现象， 请和CSB销售工程师联系

*For operation under extreme high temperature, it is necessary to consider increasing the fitting clearance to avoid stagnation caused by the high temperature expansion of the shaft and bearing. Please contact CSB sales engineers

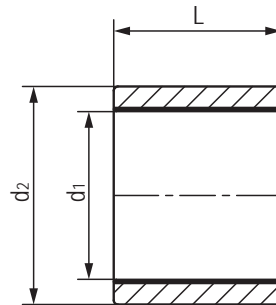


CSB-ALB®

高速滑动轴承

HIGH SPEED SLIDING BEARINGS

直套 Metric Cylindrical Bushings



产品编码 Part No.:

ALBB-0812-08

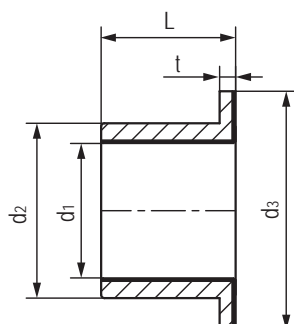
- 高度 Length
- 外径 Outside diameter
- 内径 Inner diameter
- 材料 Material: TEFPLAS™ B

座孔 Housing: H7 轴 Shaft: h6-h9

产品编码 Part No.	d ₁ [mm]	公差 Tolerance [mm]	d _{2 (S7)} [mm]	L _(H13) [mm]
ALBB-0812-08	8	+0.033/+0.066	12	8
ALBB-0812-10	8	+0.033/+0.066	12	10
ALBB-0812-12	8	+0.033/+0.066	12	12
ALBB-0814-08	8	+0.033/+0.066	14	8
ALBB-0814-10	8	+0.033/+0.066	14	10
ALBB-1014-08	10	+0.033/+0.066	14	8
ALBB-1014-10	10	+0.033/+0.066	14	10
ALBB-1014-12	10	+0.033/+0.066	14	12
ALBB-1016-08	10	+0.033/+0.066	16	8
ALBB-1016-10	10	+0.033/+0.066	16	10
ALBB-1216-10	12	+0.034/+0.070	16	10
ALBB-1216-15	12	+0.034/+0.070	16	15
ALBB-1216-20	12	+0.034/+0.070	16	20
ALBB-1218-08	12	+0.034/+0.070	18	8
ALBB-1218-10	12	+0.034/+0.070	18	10
ALBB-1218-12	12	+0.034/+0.070	18	12
ALBB-1218-15	12	+0.034/+0.070	18	15
ALBB-1218-20	12	+0.034/+0.070	18	20
ALBB-1620-12	16	+0.041/+0.080	20	12
ALBB-1620-15	16	+0.041/+0.080	20	15
ALBB-1620-20	16	+0.041/+0.080	20	20

产品编码 Part No.	d ₁ [mm]	公差 Tolerance [mm]	d _{2 (S7)} [mm]	L _(H13) [mm]
ALBB-1620-25	16	+0.041/+0.080	20	25
ALBB-1622-12	16	+0.041/+0.080	22	12
ALBB-1622-15	16	+0.041/+0.080	22	15
ALBB-1622-20	16	+0.041/+0.080	22	20
ALBB-1622-25	16	+0.041/+0.080	22	25
ALBB-2025-15	20	+0.042/+0.084	25	15
ALBB-2025-20	20	+0.042/+0.084	25	20
ALBB-2025-25	20	+0.042/+0.084	25	25
ALBB-2026-15	20	+0.042/+0.084	26	15
ALBB-2026-20	20	+0.042/+0.084	26	20
ALBB-2026-25	20	+0.042/+0.084	26	25
ALBB-2026-30	20	+0.042/+0.084	26	30
ALBB-2530-20	25	+0.050/+0.096	30	20
ALBB-2530-25	25	+0.050/+0.096	30	25
ALBB-2530-30	25	+0.050/+0.096	30	30
ALBB-2532-20	25	+0.050/+0.096	32	20
ALBB-2532-25	25	+0.050/+0.096	32	25
ALBB-2532-30	25	+0.050/+0.096	32	30
ALBB-3038-20	30	+0.050/+0.096	38	20
ALBB-3038-30	30	+0.050/+0.096	38	30
ALBB-3038-40	30	+0.050/+0.096	38	40

法兰轴承 Metric Flange Bushings



产品编码 Part No.:

ALBBF-0812-08

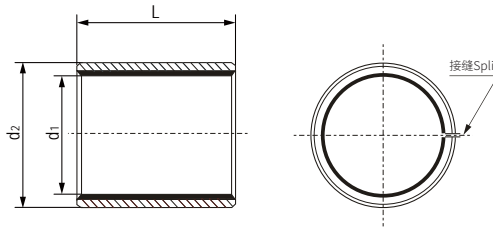


座孔 Housing: H7 轴 Shaft: h6-h9

产品编码 Part No.	d ₁ [mm]	公差 Tolerance [mm]	d _{2(s7)} [mm]	d _{3(h13)} [mm]	L _(h13) [mm]	t _(h13) [mm]
ALBBF-0812-08	8	+0.033/+0.066	12	16	8	2
ALBBF-0812-10	8	+0.033/+0.066	12	16	10	2
ALBBF-0812-12	8	+0.033/+0.066	12	16	12	2
ALBBF-0814-08	8	+0.033/+0.066	14	18	8	3
ALBBF-0814-10	8	+0.033/+0.066	14	18	10	3
ALBBF-1014-08	10	+0.033/+0.066	14	19	8	2
ALBBF-1014-10	10	+0.033/+0.066	14	19	10	2
ALBBF-1014-12	10	+0.033/+0.066	14	19	12	2
ALBBF-1016-08	10	+0.033/+0.066	16	22	8	3
ALBBF-1016-10	10	+0.033/+0.066	16	22	10	3
ALBBF-1216-10	12	+0.034/+0.070	16	22	10	2
ALBBF-1216-15	12	+0.034/+0.070	16	22	15	2
ALBBF-1216-20	12	+0.034/+0.070	16	22	20	2
ALBBF-1218-08	12	+0.034/+0.070	18	24	8	3
ALBBF-1218-10	12	+0.034/+0.070	18	22	10	3
ALBBF-1218-12	12	+0.034/+0.070	18	24	12	3
ALBBF-1218-15	12	+0.034/+0.070	18	22	15	3
ALBBF-1218-20	12	+0.034/+0.070	18	22	20	3

产品编码 Part No.	d ₁ [mm]	公差 Tolerance [mm]	d _{2(s7)} [mm]	d _{3(h13)} [mm]	L _(h13) [mm]	t _(h13) [mm]
ALBBF-1620-12	16	+0.041/+0.080	20	27	12	3
ALBBF-1620-15	16	+0.041/+0.080	20	27	15	3
ALBBF-1620-20	16	+0.041/+0.080	20	27	20	3
ALBBF-1620-25	16	+0.041/+0.080	20	27	25	3
ALBBF-1622-12	16	+0.041/+0.080	22	28	12	3
ALBBF-1622-15	16	+0.041/+0.080	22	28	15	3
ALBBF-1622-20	16	+0.041/+0.080	22	28	20	3
ALBBF-1622-25	16	+0.041/+0.080	22	28	25	3
ALBBF-2026-15	20	+0.042/+0.084	26	32	15	3
ALBBF-2026-20	20	+0.042/+0.084	26	32	20	3
ALBBF-2026-25	20	+0.042/+0.084	26	32	25	3
ALBBF-2026-30	20	+0.042/+0.084	26	32	30	3
ALBBF-2532-20	25	+0.050/+0.096	32	38	20	3
ALBBF-2532-25	25	+0.050/+0.096	32	38	25	3
ALBBF-2532-30	25	+0.050/+0.096	32	38	30	3
ALBBF-3038-20	30	+0.050/+0.096	38	44	20	3
ALBBF-3038-30	30	+0.050/+0.096	38	44	30	3
ALBBF-3038-40	30	+0.050/+0.096	38	44	40	3

直套 [接缝] Metric Cylindrical Bushings(Split)



产品编码 Part No.:

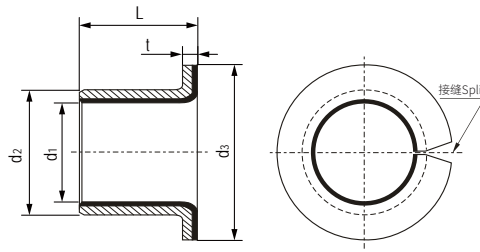
ALB-0812-08

- 高度 Length
- 外径 Outside diameter
- 内径 Inner diameter
- 材料 Material: TEFLAS® B/G

座孔 Housing: H7 轴 Shaft: h6-h9

产品编码 Part No.	d ₁ [mm]	公差 Tolerance [mm]	d _{2 (S7)} [mm]	L _(h13) [mm]	产品编码 Part No.	d ₁ [mm]	公差 Tolerance [mm]	d _{2 (S7)} [mm]	L _(h13) [mm]	产品编码 Part No.	d ₁ [mm]	公差 Tolerance [mm]	d _{2 (S7)} [mm]	L _(h13) [mm]
ALB-0507-05	5	-0.01/+0.055	7	5	ALB-1517-25	15	-0.01/+0.058	17	25	ALB-2528-25	25	-0.01/+0.071	28	25
ALB-0507-08	5	-0.01/+0.055	7	8	ALB-1618-10	16	-0.01/+0.058	18	10	ALB-2528-30	25	-0.01/+0.071	28	30
ALB-0507-10	5	-0.01/+0.055	7	10	ALB-1618-12	16	-0.01/+0.058	18	12	ALB-2832-15	28	-0.01/+0.085	32	15
ALB-0608-05	6	-0.01/+0.055	8	5	ALB-1618-15	16	-0.01/+0.058	18	15	ALB-2832-20	28	-0.01/+0.085	32	20
ALB-0608-08	6	-0.01/+0.055	8	8	ALB-1618-20	16	-0.01/+0.058	18	20	ALB-2832-25	28	-0.01/+0.085	32	25
ALB-0608-10	6	-0.01/+0.055	8	10	ALB-1618-25	16	-0.01/+0.058	18	25	ALB-2832-30	28	-0.01/+0.085	32	30
ALB-0810-08	8	-0.01/+0.055	10	8	ALB-1618-30	16	-0.01/+0.058	18	30	ALB-2832-40	28	-0.01/+0.085	32	40
ALB-0810-10	8	-0.01/+0.055	10	10	ALB-1719-10	17	-0.01/+0.061	19	10	ALB-3034-20	30	-0.01/+0.085	34	20
ALB-0810-12	8	-0.01/+0.055	10	12	ALB-1719-12	17	-0.01/+0.061	19	12	ALB-3034-25	30	-0.01/+0.085	34	25
ALB-0810-15	8	-0.01/+0.055	10	15	ALB-1719-15	17	-0.01/+0.061	19	15	ALB-3034-30	30	-0.01/+0.085	34	30
ALB-1012-08	10	-0.01/+0.058	12	8	ALB-1719-20	17	-0.01/+0.061	19	20	ALB-3034-40	30	-0.01/+0.085	34	40
ALB-1012-10	10	-0.01/+0.058	12	10	ALB-1719-25	17	-0.01/+0.061	19	25	ALB-3236-20	32	-0.01/+0.085	36	20
ALB-1012-12	10	-0.01/+0.058	12	12	ALB-1719-30	17	-0.01/+0.061	19	30	ALB-3236-25	32	-0.01/+0.085	36	25
ALB-1012-15	10	-0.01/+0.058	12	15	ALB-1820-10	18	-0.01/+0.061	20	10	ALB-3236-30	32	-0.01/+0.085	36	30
ALB-1012-20	10	-0.01/+0.058	12	20	ALB-1820-12	18	-0.01/+0.061	20	12	ALB-3236-40	32	-0.01/+0.085	36	40
ALB-1214-08	12	-0.01/+0.058	14	8	ALB-1820-15	18	-0.01/+0.061	20	15	ALB-3539-12	35	-0.01/+0.085	39	12
ALB-1214-10	12	-0.01/+0.058	14	10	ALB-1820-20	18	-0.01/+0.061	20	20	ALB-3539-15	35	-0.01/+0.085	39	15
ALB-1214-12	12	-0.01/+0.058	14	12	ALB-1820-25	18	-0.01/+0.061	20	25	ALB-3539-20	35	-0.01/+0.085	39	20
ALB-1214-15	12	-0.01/+0.058	14	15	ALB-1820-30	18	-0.01/+0.061	20	30	ALB-3539-25	35	-0.01/+0.085	39	25
ALB-1214-20	12	-0.01/+0.058	14	20	ALB-2023-10	20	-0.01/+0.062	23	10	ALB-3539-30	35	-0.01/+0.085	39	30
ALB-1214-25	12	-0.01/+0.058	14	25	ALB-2023-12	20	-0.01/+0.062	23	12	ALB-3539-40	35	-0.01/+0.085	39	40
ALB-1315-10	13	-0.01/+0.058	15	10	ALB-2023-15	20	-0.01/+0.062	23	15	ALB-3539-50	35	-0.01/+0.085	39	50
ALB-1315-12	13	-0.01/+0.058	15	12	ALB-2023-20	20	-0.01/+0.062	23	20	ALB-3842-15	38	-0.01/+0.085	42	15
ALB-1315-15	13	-0.01/+0.058	15	15	ALB-2023-25	20	-0.01/+0.062	23	25	ALB-3842-20	38	-0.01/+0.085	42	20
ALB-1315-20	13	-0.01/+0.058	15	20	ALB-2023-30	20	-0.01/+0.062	23	30	ALB-3842-25	38	-0.01/+0.085	42	25
ALB-1315-25	13	-0.01/+0.058	15	25	ALB-2225-10	22	-0.01/+0.071	25	10	ALB-3842-30	38	-0.01/+0.085	42	30
ALB-1416-10	14	-0.01/+0.058	16	10	ALB-2225-12	22	-0.01/+0.071	25	12	ALB-3842-40	38	-0.01/+0.085	42	40
ALB-1416-12	14	-0.01/+0.058	16	12	ALB-2225-15	22	-0.01/+0.071	25	15	ALB-3842-50	38	-0.01/+0.085	42	50
ALB-1416-15	14	-0.01/+0.058	16	15	ALB-2225-20	22	-0.01/+0.071	25	20	ALB-4044-20	40	-0.01/+0.085	44	20
ALB-1416-20	14	-0.01/+0.058	16	20	ALB-2225-25	22	-0.01/+0.071	25	25	ALB-4044-25	40	-0.01/+0.085	44	25
ALB-1416-25	14	-0.01/+0.058	16	25	ALB-2225-30	22	-0.01/+0.071	25	30	ALB-4044-30	40	-0.01/+0.085	44	30
ALB-1517-10	15	-0.01/+0.058	17	10	ALB-2528-10	25	-0.01/+0.071	28	10	ALB-4044-40	40	-0.01/+0.085	44	40
ALB-1517-12	15	-0.01/+0.058	17	12	ALB-2528-12	25	-0.01/+0.071	28	12	ALB-4044-50	40	-0.01/+0.085	44	50
ALB-1517-15	15	-0.01/+0.058	17	15	ALB-2528-15	25	-0.01/+0.071	28	15					
ALB-1517-20	15	-0.01/+0.058	17	20	ALB-2528-20	25	-0.01/+0.071	28	20					

法兰轴承[接缝] Metric Flange Bushings(Split)



产品编码 Part No.:

ALBF-0812-08

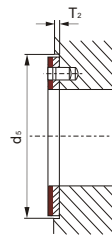
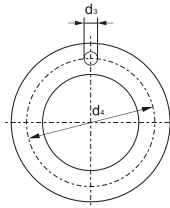
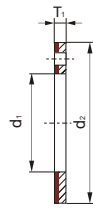
- 高度 Length
- 外径 Outside diameter
- 内径 Inner diameter
- 法兰设计 Flange design
- 材料 Material: TEFPLAS® B/G

座孔 Housing: H7 轴 Shaft: h6-h9

产品编码 Part No.	d ₁ [mm]	公差 Tolerance [mm]	d _{2(s7)} [mm]	d _{3(h13)} [mm]	L _(h13) [mm]	t _(h13) [mm]
ALBF-0507-05	5	-0.01/+0.055	7	11	5	1
ALBF-0507-10	5	-0.01/+0.055	7	11	10	1
ALBF-0608-04	6	-0.01/+0.055	8	12	4	1
ALBF-0608-05	6	-0.01/+0.055	8	12	5	1
ALBF-0608-06	6	-0.01/+0.055	8	12	6	1
ALBF-0608-07	6	-0.01/+0.055	8	12	7	1
ALBF-0608-08	6	-0.01/+0.055	8	12	8	1
ALBF-0608-10	6	-0.01/+0.055	8	12	10	1
ALBF-0810-055	8	-0.01/+0.055	10	15	5.5	1
ALBF-0810-075	8	-0.01/+0.055	10	15	7.5	1
ALBF-0810-095	8	-0.01/+0.055	10	15	9.5	1
ALBF-0810-10	8	-0.01/+0.055	10	15	10	1
ALBF-0810-15	8	-0.01/+0.055	10	15	15	1
ALBF-1012-05	10	-0.01/+0.058	12	18	5	1
ALBF-1012-06	10	-0.01/+0.058	12	18	6	1
ALBF-1012-07	10	-0.01/+0.058	12	18	7	1
ALBF-1012-09	10	-0.01/+0.058	12	18	9	1
ALBF-1012-10	10	-0.01/+0.058	12	18	10	1
ALBF-1012-12	10	-0.01/+0.058	12	18	12	1
ALBF-1012-15	10	-0.01/+0.058	12	18	15	1
ALBF-1214-06	12	-0.01/+0.058	14	20	6	1
ALBF-1214-07	12	-0.01/+0.058	14	20	7	1
ALBF-1214-09	12	-0.01/+0.058	14	20	9	1
ALBF-1214-10	12	-0.01/+0.058	14	20	10	1
ALBF-1214-12	12	-0.01/+0.058	14	20	12	1
ALBF-1214-15	12	-0.01/+0.058	14	20	15	1
ALBF-1214-17	12	-0.01/+0.058	14	20	17	1
ALBF-1214-20	12	-0.01/+0.058	14	20	20	1
ALBF-1416-04	14	-0.01/+0.058	16	22	4	1
ALBF-1416-06	14	-0.01/+0.058	16	22	6	1
ALBF-1416-08	14	-0.01/+0.058	16	22	8	1
ALBF-1416-10	14	-0.01/+0.058	16	22	10	1
ALBF-1416-12	14	-0.01/+0.058	16	22	12	1
ALBF-1416-15	14	-0.01/+0.058	16	22	15	1

产品编码 Part No.	d ₁ [mm]	公差 Tolerance [mm]	d _{2(s7)} [mm]	d _{3(h13)} [mm]	L _(h13) [mm]	t _(h13) [mm]
ALBF-1416-17	14	-0.01/+0.058	16	22	17	1
ALBF-1517-09	15	-0.01/+0.058	17	23	9	1
ALBF-1517-12	15	-0.01/+0.058	17	23	12	1
ALBF-1517-17	15	-0.01/+0.058	17	23	17	1
ALBF-1517-20	15	-0.01/+0.058	17	23	20	1
ALBF-1618-06	16	-0.01/+0.058	18	24	6	1
ALBF-1618-09	16	-0.01/+0.058	18	24	9	1
ALBF-1618-12	16	-0.01/+0.058	18	24	12	1
ALBF-1618-17	16	-0.01/+0.058	18	24	17	1
ALBF-1618-21	16	-0.01/+0.058	18	24	21	1
ALBF-1820-04	18	-0.01/+0.061	20	26	4	1
ALBF-1820-06	18	-0.01/+0.061	20	26	6	1
ALBF-1820-09	18	-0.01/+0.061	20	26	9	1
ALBF-1820-12	18	-0.01/+0.061	20	26	12	1
ALBF-1820-17	18	-0.01/+0.061	20	26	17	1
ALBF-1820-30	18	-0.01/+0.061	20	26	30	1
ALBF-2023-11.5	20	-0.01/+0.062	23	30	11.5	1.5
ALBF-2023-16.5	20	-0.01/+0.062	23	30	16.5	1.5
ALBF-2023-21.5	20	-0.01/+0.062	23	30	21.5	1.5
ALBF-2528-11.5	25	-0.01/+0.071	28	35	11.5	1.5
ALBF-2528-16.5	25	-0.01/+0.071	28	35	16.5	1.5
ALBF-2528-21.5	25	-0.01/+0.071	28	35	21.5	1.5
ALBF-3034-16	30	-0.01/+0.085	34	42	16	2
ALBF-3034-20	30	-0.01/+0.085	34	42	20	2
ALBF-3034-26	30	-0.01/+0.085	34	42	26	2
ALBF-3034-37	30	-0.01/+0.085	34	42	37	2
ALBF-3539-12	35	-0.01/+0.085	39	47	12	2
ALBF-3539-16	35	-0.01/+0.085	39	47	16	2
ALBF-3539-26	35	-0.01/+0.085	39	47	26	2
ALBF-3539-36	35	-0.01/+0.085	39	47	36	2
ALBF-4044-20	40	-0.01/+0.085	44	52	20	2
ALBF-4044-30	40	-0.01/+0.085	44	52	30	2
ALBF-4044-40	40	-0.01/+0.085	44	52	40	2
ALBF-4044-50	40	-0.01/+0.085	44	52	50	2

止推垫片 Thrust Washers



产品编码 Part No.:

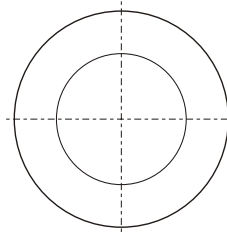
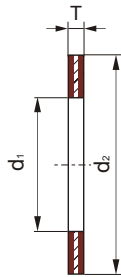
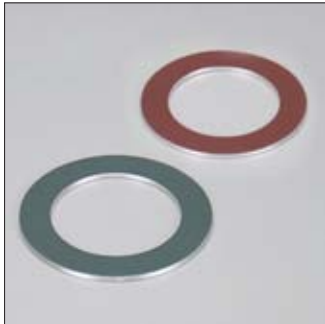
ALBSW-1020-015

- 厚度 Thickness
- 外径 Outside diameter
- 内径 Inner diameter
- 止推垫片 Thrust Washers
- 单面耐磨层
Sliding layer on one side
- 材料 Material: TEFPLAS® B/G

产品编码 Part No.	$d_1^{+0.25}$ [mm]	$d_2^{-0.25}$ [mm]	$T_1^{-0.05}$ [mm]	$d_3^{+0.1}$ $^{+0.4}$ [mm]	$d_4 \pm 0.125$ [mm]	$d_5^{+0.12}$ [mm]	$T_2 \pm 0.2$ [mm]
ALBSW-0818-015	8	18	1.5	1	13	18	1
ALBSW-1020-015	10	20	1.5	1.5	15	20	1
ALBSW-1224-015	12	24	1.5	1.5	18	24	1
ALBSW-1426-015	14	26	1.5	2	20	26	1
ALBSW-1630-015	16	30	1.5	2	23	30	1
ALBSW-1832-015	18	32	1.5	2	25	32	1
ALBSW-2036-015	20	36	1.5	3	28	36	1
ALBSW-2238-015	22	38	1.5	3	30	38	1
ALBSW-2442-015	24	42	1.5	3	33	42	1
ALBSW-2644-015	26	44	1.5	3	35	44	1
ALBSW-2848-015	28	48	1.5	4	38	48	1
ALBSW-3254-015	32	54	1.5	4	43	54	1
ALBSW-3862-015	38	62	1.5	4	50	62	1
ALBSW-4266-015	42	66	1.5	4	54	66	1
ALBSW-4874-020	48	74	2	4	61	74	1.5
ALBSW-5278-020	52	78	2	4	65	78	1.5
ALBSW-6290-020	62	90	2	4	76	90	1.5

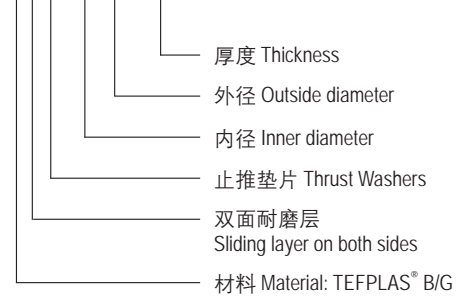
产品编码 Part No.	$d_1^{+0.25}$ [mm]	$d_2^{-0.25}$ [mm]	$T_1^{-0.05}$ [mm]	$d_3^{+0.1}$ $^{+0.4}$ [mm]	$d_4 \pm 0.125$ [mm]	$d_5^{+0.12}$ [mm]	$T_2 \pm 0.2$ [mm]
ALGSW-0818-015	8	18	1.5	1	13	18	1
ALGSW-1020-015	10	20	1.5	1.5	15	20	1
ALGSW-1224-015	12	24	1.5	1.5	18	24	1
ALGSW-1426-015	14	26	1.5	2	20	26	1
ALGSW-1630-015	16	30	1.5	2	23	30	1
ALGSW-1832-015	18	32	1.5	2	25	32	1
ALGSW-2036-015	20	36	1.5	3	28	36	1
ALGSW-2238-015	22	38	1.5	3	30	38	1
ALGSW-2442-015	24	42	1.5	3	33	42	1
ALGSW-2644-015	26	44	1.5	3	35	44	1
ALGSW-2848-015	28	48	1.5	4	38	48	1
ALGSW-3254-015	32	54	1.5	4	43	54	1
ALGSW-3862-015	38	62	1.5	4	50	62	1
ALGSW-4266-015	42	66	1.5	4	54	66	1
ALGSW-4874-020	48	74	2	4	61	74	1.5
ALGSW-5278-020	52	78	2	4	65	78	1.5
ALGSW-6290-020	62	90	2	4	76	90	1.5

止推垫片 Thrust Washers



产品编码 Part No.:

ALBBW-1020-015



产品编码 Part No.	$d_1^{+0.25}$ [mm]	$d_2^{-0.25}$ [mm]	$T_{-0.05}$ [mm]
ALBBW-0818-015	8	18	1.5
ALBBW-1020-015	10	20	1.5
ALBBW-1224-015	12	24	1.5
ALBBW-1426-015	14	26	1.5
ALBBW-1630-015	16	30	1.5
ALBBW-1832-015	18	32	1.5
ALBBW-2036-015	20	36	1.5
ALBBW-2238-015	22	38	1.5
ALBBW-2442-015	24	42	1.5
ALBBW-2644-015	26	44	1.5
ALBBW-2848-015	28	48	1.5
ALBBW-3254-015	32	54	1.5
ALBBW-3862-015	38	62	1.5
ALBBW-4266-015	42	66	1.5
ALBBW-4874-020	48	74	2
ALBBW-5278-020	52	78	2
ALBBW-6290-020	62	90	2
ALGBW-0818-015	8	18	1.5

产品编码 Part No.	$d_1^{+0.25}$ [mm]	$d_2^{-0.25}$ [mm]	$T_{-0.05}$ [mm]
ALGBW-1020-015	10	20	1.5
ALGBW-1224-015	12	24	1.5
ALGBW-1426-015	14	26	1.5
ALGBW-1630-015	16	30	1.5
ALGBW-1832-015	18	32	1.5
ALGBW-2036-015	20	36	1.5
ALGBW-2238-015	22	38	1.5
ALGBW-2442-015	24	42	1.5
ALGBW-2644-015	26	44	1.5
ALGBW-2848-015	28	48	1.5
ALGBW-3254-015	32	54	1.5
ALGBW-3862-015	38	62	1.5
ALGBW-4266-015	42	66	1.5
ALGBW-4874-020	48	74	2
ALGBW-5278-020	52	78	2
ALGBW-6290-020	62	90	2

[Https: //www.csb-ep.com](https://www.csb-ep.com)

浙江长盛塑料轴承技术有限公司
地址: 浙江省嘉善惠民街道汾湖路6号
邮编: 314100
Tel: 0573-84186133/84185527
E-mail: sales@csb-ep.com

Zhejiang CSB Plastic Bearing Technology Co.,Ltd.
Add: No.6, Fenu Road, Huimin Sub-district, Jiashan, Zhejiang, China
Zip Code: 314100
Tel: 0086 573 84187009/84187672
E-mail: sales@csb-ep.com

总部: 浙江长盛滑动轴承股份有限公司
地址: 浙江嘉善经济开发区鑫达路6号
[Https: //www.csb.com.cn](https://www.csb.com.cn)

Zhejiang Changsheng Sliding Bearing Co., Ltd.
Add: No.6 Xinda Road, Economic Development Zone,
Jiashan, Zhejiang, China.

▣ CSB PLASTIC agent or distributor



CSB/CAT.058E
Print: 11/2020