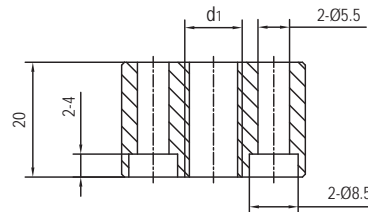
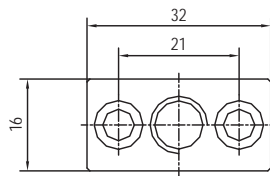


## 特殊螺母 Special nuts

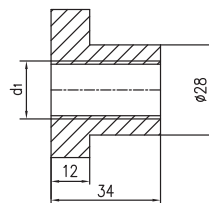
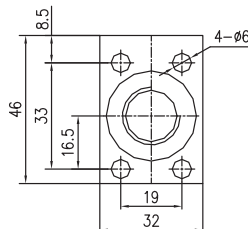


### 产品特性 Product features

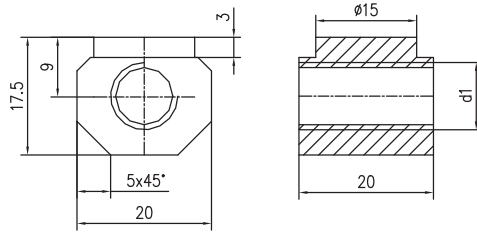
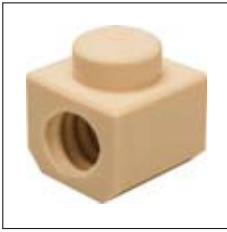
- 为LMS直线运动系统而特殊设计的丝杆螺母
- 自润滑、低磨损
- 极低的摩擦系数
- 耐腐蚀，可用于液体介质环境
- 抵抗灰尘和无噪音运行
- 节约安装空间，易装配
- 可选材料：EPB13, EPB7, EPB5A
- Special design nuts for LMS linear motion system
- Self lubricating and lower wear
- Best coefficient of friction
- Chemical resistant
- Dust resistant and quiet running
- Save space and Easy installation
- Available materials: EPB13, EPB7 and EPB5A



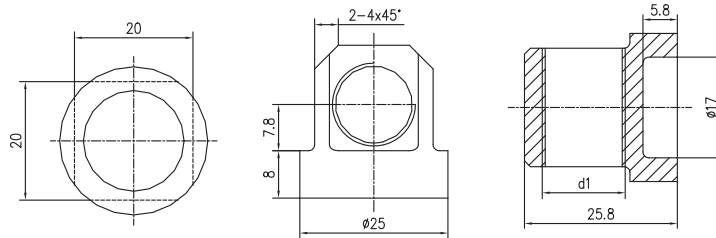
产品编码 Part No.	$d_1 \times s$ [mm]	头数 Number of threads N [pcs]	平台页码 LMS Page
LMS01-1210-TR10 × 2R-N1	TR10 × 2	1	P242-243
LMS01-1210-TR10 × 3R-N1	TR10 × 3	1	P242-243
LMS01-1210-HTR10 × 12R-N4	HTR10 × 12	4	P242-243
LMS01-1210-HTR10 × 25R-N10	HTR10 × 25	10	P242-243



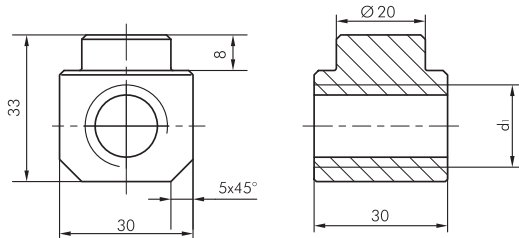
产品编码 Part No.	螺纹 Thread [mm]	头数 Number of threads N [pcs]	平台页码 LMS Page
LMS01-2018-TR18 × 4R-N1	TR18 × 4	1	P242-243
LMS01-2018-TR18 × 8R-N2	TR18 × 8	2	P242-243



产品编码 Part No.	$d_1 \times s$ [mm]	头数 Number of threads N [pcs]	平台页码 LMS Page
LMS02-1040-TR10 × 2R-N1	TR10 × 2	1	P244-245
LMS02-1040-TR10 × 3R-N1	TR10 × 3	1	P244-245
LMS02-1040-HTR10 × 12R-N4	HTR10 × 12	4	P244-245
LMS02-1040-HTR10 × 25R-N4	HTR10 × 25	10	P244-245



产品编码 Part No.	$d_1 \times s$ [mm]	头数 Number of threads N [pcs]	平台页码 LMS Page
LMS02-1660-TR14 × 3R-N1	TR14 × 3	1	P244-245
LMS02-1660-TR14 × 4R-N1	TR14 × 4	1	P244-245
LMS02-1660-HTR14 × 30R-N6	HTR14 × 30	6	P244-245



产品编码 Part No.	$d_1 \times s$ [mm]	头数 Number of threads N [pcs]	平台页码 LMS Page
LMS02-2080-TR18 × 4R-N1	TR18 × 4	1	P244-245
LMS02-2080-TR18 × 8R-N2	TR18 × 8	2	P244-245
LMS02-2080-HTR18 × 24R-N8	HTR18 × 24	8	P244-245