

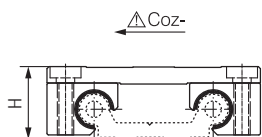
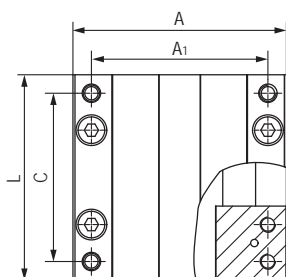
WRC01圆导轨滑台 Assembled guide carriages



产品特性 Product features

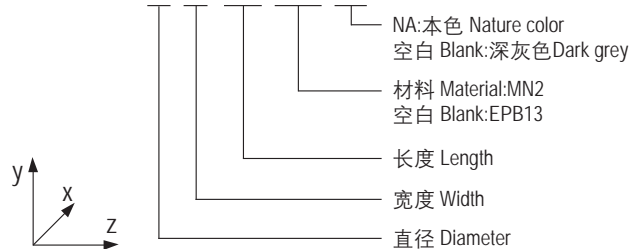
- 安装标准滑动膜EPB13
- 自润滑、免维护
- 重量轻、快速装配
- 用于WR系列双轨
- 抵抗灰尘
- 无噪音运行
- Fitted standard liners EPB13
- Maintenance-free, dry-running
- Fast assembly and light weight
- For WR dual guide rails
- Resistant dust and silent
- Silent operation
- Variable length can be fitted

标准规格 Standard specifications



产品编码 Part No.:

WRC01-10-40-100-MN2-NA



产品编码 Part No.	A [mm]	A ₁ [mm]	L [mm]	C [mm]	H [mm]	静态载荷 Static load					重量 Weight [kg]
						Coy- [N]	Coz [N]	Mox [Nm]	Moy [Nm]	Moz [Nm]	
WRC01-10-40-100	73	60	100	87	24	4800	2400	96	170	170	0.29
WRC01-10-40-150	73	60	150	137	24	4800	2400	96	290	290	0.34
WRC01-10-40-200	73	60	200	187	24	4800	2400	96	410	410	0.4
WRC01-10-80-100	107	94	100	87	24	4800	2400	178	170	170	0.34
WRC01-10-80-150	107	94	150	137	24	4800	2400	178	290	290	0.42
WRC01-10-80-200	107	94	200	187	24	4800	2400	178	410	410	0.5
WRC01-16-60-100	104	86	100	82	35	8400	4200	240	270	270	0.71
WRC01-16-60-150	104	86	150	132	35	8400	4200	240	480	480	0.84
WRC01-16-60-200	104	86	200	182	35	8400	4200	240	690	690	0.97
WRC01-20-80-150	134	116	150	132	44	12800	6400	525	670	670	1.2
WRC01-20-80-200	134	116	200	182	44	12800	6400	525	990	990	1.2
WRC01-20-80-250	134	116	250	232	44	12800	6400	525	1250	1250	1.5

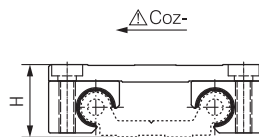
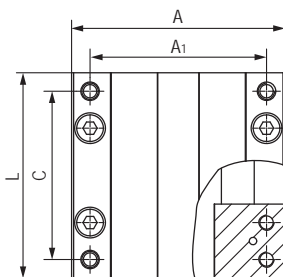
WRC01圆导轨滑台 Assembled guide carriages



产品特性 Product features

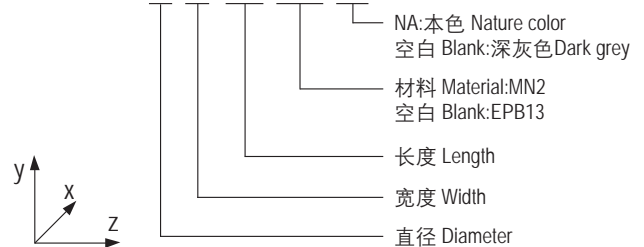
- 铝轴滑动膜MN2
- 自润滑、免维护
- 重量轻、快速装配
- 用于WR系列双轨
- 抵抗灰尘
- 无噪音运行
- MN2 liners for aluminum shafts
- Maintenance-free, dry-running
- Fast assembly and light weight
- For WR dual guide rails
- Resistant dust and silent
- Silent operation
- Variable length can be fitted

标准规格 Standard specifications



产品编码 Part No.:

WRC01-10-40-100-MN2-NA



产品编码 Part No.	A [mm]	A ₁ [mm]	L [mm]	C [mm]	H [mm]	静态载荷 Static load					重量 Weight [kg]
						Coy- [N]	Coz [N]	Mox [Nm]	Moy [Nm]	Moz [Nm]	
WRC01-10-40-100-MN2	73	60	100	87	24	4800	2400	96	170	170	0.29
WRC01-10-40-150-MN2	73	60	150	137	24	4800	2400	96	290	290	0.34
WRC01-10-40-200-MN2	73	60	200	187	24	4800	2400	96	410	410	0.4
WRC01-10-80-100-MN2	107	94	100	87	24	4800	2400	178	170	170	0.34
WRC01-10-80-150-MN2	107	94	150	137	24	4800	2400	178	290	290	0.42
WRC01-10-80-200-MN2	107	94	200	187	24	4800	2400	178	410	410	0.5
WRC01-16-60-100-MN2	104	86	100	82	35	8400	4200	240	270	270	0.71
WRC01-16-60-150-MN2	104	86	150	132	35	8400	4200	240	480	480	0.84
WRC01-16-60-200-MN2	104	86	200	182	35	8400	4200	240	690	690	0.97
WRC01-20-80-150-MN2	134	116	150	132	44	12800	6400	525	670	670	1.2
WRC01-20-80-200-MN2	134	116	200	182	44	12800	6400	525	990	990	1.2
WRC01-20-80-250-MN2	134	116	250	232	44	12800	6400	525	1250	1250	1.5

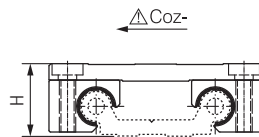
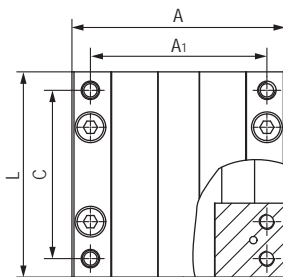
WRC01圆导轨滑台 Assembled guide carriages



产品特性 Product features

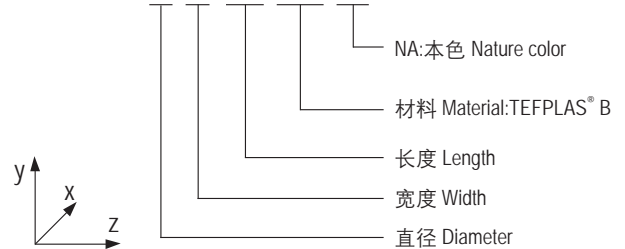
- 耐磨层材料TEFPLAS[®]B
 - 使用温度 ± 200℃
 - 最高允许速度4m/s
 - 重量轻、快速装配
 - 用于WR系列双轨
 - 抵抗灰尘
 - 无噪音运行
- Wear layer material: TEFPLAS[®] B
 - Operation temperature ± 200℃
 - Max. speed 4m/s
 - Fast assembly and light weight
 - For WR dual guide rails
 - Resistant dust and silent
 - Silent operation
 - Variable length can be fitted

标准规格 Standard specifications



产品编码 Part No.:

WRC01-10-40-100-TPB-NA



产品编码 Part No.	A [mm]	A ₁ [mm]	L [mm]	C [mm]	H [mm]	静态载荷 Static load					重量 Weight [kg]
						Coy- [N]	Coz [N]	Mox [Nm]	Moy [Nm]	Moz [Nm]	
WRC01-10-40-100-TPB	73	60	100	87	24	5600	2800	112	200	200	0.29
WRC01-10-40-150-TPB	73	60	150	137	24	5600	2800	112	340	340	0.34
WRC01-10-40-200-TPB	73	60	200	187	24	5600	2800	112	482	482	0.4
WRC01-10-80-100-TPB	107	94	100	87	24	5600	2800	209	200	200	0.34
WRC01-10-80-150-TPB	107	94	150	137	24	5600	2800	209	340	340	0.42
WRC01-10-80-200-TPB	107	94	200	187	24	5600	2800	209	482	482	0.5
WRC01-16-60-100-TPB	104	86	100	82	35	9840	4920	282	318	318	0.71
WRC01-16-60-150-TPB	104	86	150	132	35	9840	4920	282	565	565	0.84
WRC01-16-60-200-TPB	104	86	200	182	35	9840	4920	282	810	810	0.97
WRC01-20-80-150-TPB	134	116	150	132	44	15040	7520	617	788	788	1.2
WRC01-20-80-200-TPB	134	116	200	182	44	15040	7520	617	1164	1164	1.2
WRC01-20-80-250-TPB	134	116	250	232	44	15040	7520	617	1470	1470	1.5