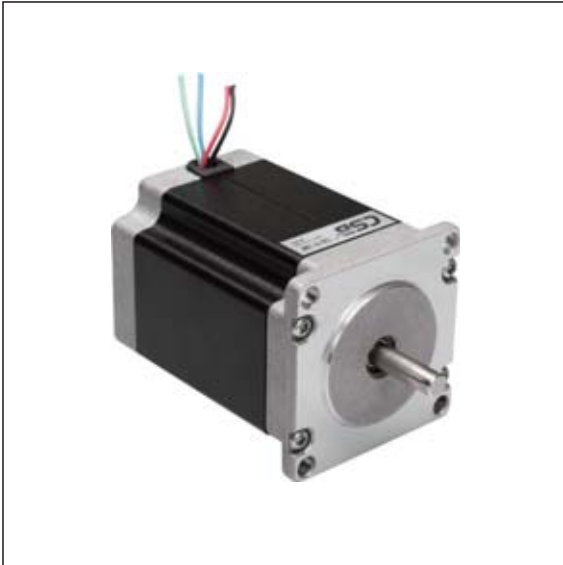


## 步进电机 Stepper motors, SM01



### 产品特性 Product features

- SM01电机是性价比高的步进电机，这款电机的连接线直接从外壳接出，适合安装在有额外外壳或用于清洁环境中的机器设备
- SM01 motor is the most cost-effective stepper motor, this motor cable directly exit from the housing, They are suitable for installation in an extra housing or for the machine equipment in cleaning the environment

### 标准规格 Standard specifications

产品编码 Part No.	最大电压 Max. voltage [VDC]	额定电压 Nominal voltage [VDC]	额定电流 Nominal current [A]	步距角 Step angle [°]	机座尺寸 Flange dimension [mm]	长度 Length [mm]	保持扭矩 Holding torque [N*m]	转动惯量 Moment of inertia / rotor [kg*cm <sup>2</sup> ]	载荷Load [N]		重量 Weight [kg]
									轴向 Axial	径向 Radial	
SM01-11-060-001	60	24-48	1.6	1.8	28	51.0	0.12	0.02	7	20	0.20
SM01-17-060-005	60	24-48	1.8	1.8	42	48.3	0.50	0.08	7	20	0.36
SM01-23-060-020	60	24-48	2.2	1.8	56	76.0	1.80	0.46	15	52	1.00
SM01-24-060-035	60	24-48	4.5	1.8	60	85.0	2.50	0.90	15	63	1.40
SM01-34-060-059	60	24-48	7.0	1.8	86	96.0	5.00	1.85	65	200	2.70

#### 运行数据 Operating data

环境温度 Ambient temperature	℃	-10至+50
最大运行上升温度 Max temperature rise	℃	80
绝缘等级 Insulation class		B
空气湿度（无压缩） Humidity (not condensing)	%	85
IP等级-电机外壳 Protection class engine case		IP65（轴密封 Shaft seal IO52，电机带绞线 Motor with stranded wires IP40）
CE认证 Standard		EVM标准 EMV guideline