

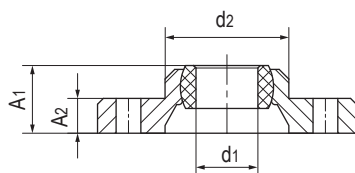
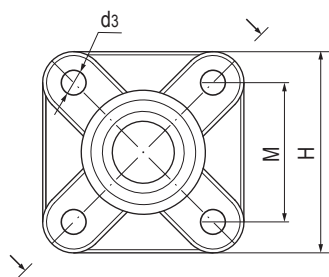
GSB法兰关节轴承 Flange spherical bearings



产品特性 Product features

- 球体采用高耐磨材料EPB15制成
 - 保持器采用抗压和尺寸稳定性材料M163制成
 - 干运行、免维护
 - 抵抗灰尘和污垢
 - 补偿中心误差
 - 耐腐蚀，可用于液体介质环境
 - 重量轻、易安装
- Spherical ball made of highly wear-resistant EPB15
 - Housing made of high strength and shape-stable M163
 - Maintenance-free dry operation
 - Resistant to dust and dirt
 - Compensation of misalignment errors
 - Absolute corrosion resistance
 - Very light, easy installation

标准规格 Standard specifications



产品编码 Part No.:

GSB-04

内径 Inner diameter

产品编码 Part No.	d ₁ E10 [mm]	d ₂ [mm]	d ₃ [mm]	A ₁ [mm]	A ₂ [mm]	M [mm]	H [mm]	最大静载荷 Max. axial static load		最大径向静态负荷 Max. radial static load		最大静态转 矩孔 Max. tight-ening torque -Holes [Nm]	最大调节角度 Max. adjust angle	重量 Weight [g]
								短期 Short-term [N]	长期 Long-term [N]	短期 Short-term [N]	长期 Long-term [N]			
GSB-04	4	14	3.2	8.5	4.5	17	25	200	100	1000	500	0.6	28°	2.6
GSB-05	5	14	3.2	8.5	4.5	17	25	300	150	1000	500	0.6	29°	2.7
GSB-06	6	14	3.2	8.5	4.5	17	25	300	150	1000	500	0.6	25°	2.8
GSB-08	8	18	4.3	10.5	5.5	22	33	450	225	1400	700	1.3	25°	5.9
GSB-10	10	22	5.3	12	6.5	26	38	700	350	2000	1000	2.5	25°	9.1
GSB-12	12	25	5.3	13	7	28	40	850	425	2500	1250	2.5	21°	11
GSB-15	15	30	6.4	15.5	8.5	34	49	1100	550	3000	1500	4.5	20°	20.2
GSB-16	16	32	6.4	16.5	9	36	52	1350	675	3200	1600	4.5	27°	23.3
GSB-20	20	40	8.4	20	11	45	65	2000	1000	4000	2000	10.5	19°	45
GSB-25	25	48.5	8.4	25	14	52	74	2400	1200	5600	2800	10.5	15°	76
GSB-30	30	55	10.5	26	15	60	85	2800	1400	6000	3000	21.5	14°	100.7