

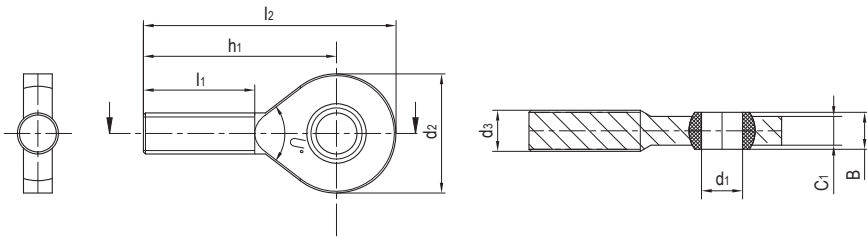
GOB杆端关节轴承，外螺纹 Rod end bearings, male thread



产品特性 Product features

- 球体采用高耐磨材料EPB15制成
 - 连接器采用高强度和尺寸稳定性材料M163制成
 - 自润滑、免维护
 - 光面设计耐灰尘
 - 很好的耐腐蚀性能
 - 补偿心中误差
 - 无噪音、重量轻
- Spherical ball made of highly wear-resistant EPB15
 - Connection rod made of high strength and shape-stable M163
 - Maintenance-free dry operation
 - Smooth design has no dirt traps
 - Absolute corrosion resistance
 - Compensation of misalignment errors
 - No noise and light weight

标准规格 Standard specifications



产品编码 Part No.:

GOBR-06

内径 Inner diameter
R: 右旋 Right
L: 左旋 Left

| 产品编码 Part No. | d ₁ [mm] | d ₂ [mm] | d ₃ [mm] | B [mm] | l ₁ [mm] | l ₂ [mm] | h ₁ [mm] | C ₁ [mm] | 最大静态抗拉强度 Max. static tensile strength | | 最大径向静态负荷 Max. radial static load | | 最小螺纹 深度 Min. thread depth | 球体最大扭矩 Max. tightening torque through ball [Nm] | 重量 Weight [g] |
|------------------|------------------------|------------------------|------------------------|-----------|------------------------|------------------------|------------------------|------------------------|--|------------------------|-------------------------------------|------------------------|------------------------------------|---|---------------------|
| | | | | | | | | | 短期 Short-term [N] | 长期 Long-term [N] | 短期 Short-term [N] | 长期 Long-term [N] | | | |
| GOBR-06 | 6 | 21 | M6 | 6 | 20 | 46.5 | 36 | 4.4 | 850 | 425 | 80 | 40 | 14 | 0.5 | 2.7 |
| GOBR-08 | 8 | 24 | M8 | 8 | 24 | 53 | 41 | 6 | 1600 | 800 | 160 | 80 | 17 | 2 | 5.1 |
| GOBR-10 | 10 | 29 | M10 | 9 | 27 | 62 | 47.5 | 7 | 2600 | 1300 | 250 | 125 | 19 | 5 | 8.4 |
| GOBL-06 | 6 | 21 | M6 | 6 | 20 | 46.5 | 36 | 4.4 | 850 | 425 | 80 | 40 | 14 | 0.5 | 2.7 |
| GOBL-08 | 8 | 24 | M8 | 8 | 24 | 53 | 41 | 6 | 1600 | 800 | 160 | 80 | 17 | 2 | 5.1 |
| GOBL-10 | 10 | 29 | M10 | 9 | 27 | 62 | 47.5 | 7 | 2600 | 1300 | 250 | 125 | 19 | 5 | 8.4 |