

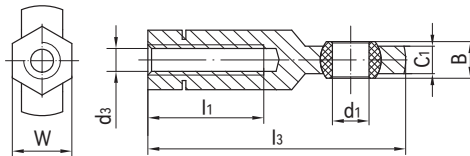
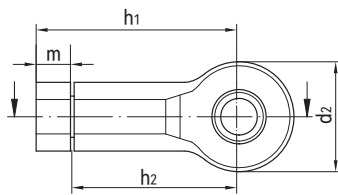
## GIB杆端关节轴承, 内螺纹 Rod end bearings, female thread



### 产品特性 Product features

- 球体采用高耐磨材料EPB15制成
  - 连接器采用高强度和尺寸稳定性材料M163制成
  - 自润滑、免维护
  - 光面设计耐灰尘
  - 很好的耐腐蚀性能
  - 补偿心中误差
  - 无噪音、重量轻
  - 带锁定螺母易安装
- Spherical ball made of highly wear-resistant EPB15
  - Connection rod made of high strength and shape-stable M163
  - Maintenance-free dry operation
  - Smooth design has no dirt traps
  - Absolute corrosion resistance
  - Compensation of misalignment errors
  - No noise and light weight
  - Simple assembly due to the integrated lock nut

### 标准规格 Standard specifications



产品编码 Part No.:

GIBR-06

内径 Inner diameter  
R: 右旋 Right  
L: 左旋 Left

产品编码 Part No.	d <sub>1</sub> [mm]	d <sub>2</sub> [mm]	d <sub>3</sub> [mm]	W [mm]	B [mm]	l <sub>1</sub> [mm]	l <sub>3</sub> [mm]	h <sub>1</sub> [mm]	h <sub>2</sub> [mm]	C <sub>1</sub> [mm]	m [mm]	最大静态 抗拉强度 Max. static tensile strength		最大径向 静态负荷 Max. radial static load		最小 螺纹 深度 Min. thread depth	球体 最大扭矩 Max. tightening torque through ball	重量 Weight [g]
												短期 Short- term [N]	长期 Long- term [N]	短期 Short- term [N]	长期 Long- term [N]			
GIBR-06	6	21	M6	SW10	6	20	46.5	36.5	30	4.4	5.7	1500	750	200	100	8	2.5	4.5
GIBR-08	8	24	M8	SW13	8	25	56.3	44.3	36	6	7.5	2000	1000	450	225	11	7	8.6
GIBR-10	10	29	M10	SW15	9	30	67.2	52.2	43	7	8.4	2300	1150	500	250	13	14	14.1
GIBR-10F	10	29	M10*1.25	SW15	9	30	67.2	52.2	43	7	8.4	2300	1150	500	250	13	14	14.1
GIBR-12	12	34	M12	SW17	10	35	77.1	60.1	50	8	10	3300	1650	550	275	15	25	17.1
GIBR-12F	12	34	M12*1.25	SW17	10	35	77.1	60.1	50	8	10	3300	1650	550	275	15	25	17.1
GIBL-06	6	21	M6	SW10	6	20	46.5	36.5	30	4.4	5.7	1500	750	200	100	8	2.5	4.5
GIBL-08	8	24	M8	SW13	8	25	56.3	44.3	36	6	7.5	2000	1000	450	225	11	7	8.6
GIBL-10	10	29	M10	SW15	9	30	67.2	52.2	43	7	8.4	2300	1150	500	250	14	25	14.1
GIBL-10F	10	29	M10*1.25	SW15	9	30	67.2	52.2	43	7	8.4	2300	1150	500	250	13	14	14.1
GIBL-12	12	34	M12	SW17	10	35	77.1	60.1	50	8	10	3300	1650	550	275	15	25	17.1
GIBL-12F	12	34	M12*1.25	SW17	10	35	77.1	60.1	50	8	10	3300	1650	550	275	15	25	17.1

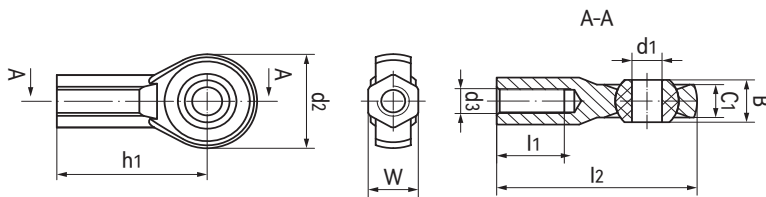
### GIB杆端关节轴承, 内螺纹 Rod end bearings, female thread



#### 产品特性 Product features

- K型球体材料: EPB15
  - 不锈钢球体用于高锁紧力矩
  - 基座材料: M163
  - 自润滑、免维护
  - 耐粉尘与化学腐蚀
  - 补偿心中误差
  - 无噪音、重量轻
- K type ball material EPB15
  - Stainless steel balls for higher tightening torque
  - Housing material: M163
  - Maintenance-free and dry operation
  - Dirt, dust, chemical-resistant
  - Compensation of misalignment errors
  - Noise free and light weight

#### 标准规格 Standard specifications



产品编码 Part No.:

GIBR-K05-ES3

- 不锈钢球体  
Stainless steel ball
- 内径 Inner diameter
- K系列 Series
- R: 右旋 Right
- L: 左旋 Left

产品编码 Part No.	d <sub>1</sub> [mm]	d <sub>2</sub> [mm]	d <sub>3</sub> [mm]	W [mm]	B [mm]	l <sub>1</sub> [mm]	l <sub>2</sub> [mm]	h <sub>1</sub> [mm]	C <sub>1</sub> [mm]	最大静态抗拉强度 Max. static tensile strength		最大径向静态负荷 Max. radial static load		最小 螺纹 深度 Min. thread depth	球体 最大扭矩 Max. tightening torque through ball [Nm]	重量 Weight [g]
										短期 Short- term [N]	长期 Long- term [N]	短期 Short- term [N]	长期 Long- term [N]			
GIBR-K06	6	20	M06	SW10	9	13.5	40	30	7	1400	700	300	150	13.5	10	4.2
GIBR-K08	8	24	M08	SW13	12	17	48	36	9	2100	1050	500	250	17	12	7.6
GIBR-K10	10	30	M10	SW15	14	22	58	43	10.5	3100	1550	800	400	22	20	12.8
GIBR-K10-F	10	30	M10x1.25	SW15	14	22	58	43	10.5	3100	1550	800	400	22	20	12.8
GIBR-K06-ES3	6	20	M06	SW10	9	13.5	40	30	7	1400	700	300	150	13.5	15	8.7
GIBR-K08-ES3	8	24	M08	SW13	12	17	48	36	9	2100	1050	500	250	17	40	16.8
GIBR-K10-ES3	10	30	M10	SW15	14	22	58	43	10.5	3100	1550	800	400	22	50	27.2
GIBR-K10-F-ES3	10	30	M10x1.25	SW15	14	22	58	43	10.5	3100	1550	800	400	22	50	27.2

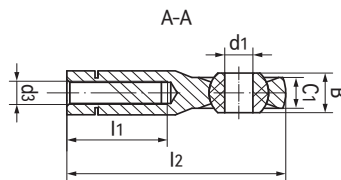
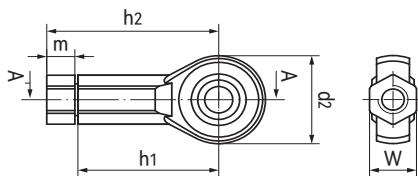
## GIB杆端关节轴承，内螺纹 Rod end bearings, female thread



### 产品特性 Product features

- K型球体材料: EPB15
  - 可选不锈钢球体
  - 基座材料: M163
  - 带锁定螺母易安装
  - 自润滑、免维护
  - 耐粉尘与化学腐蚀
  - 补偿心中误差
  - 无噪音、重量轻
- K type ball material EPB15
  - Stainless steel balls for higher tightening torque
  - Housing material: M163
  - Simple assembly with the locking nut
  - Maintenance-free and dry operation
  - Dirt, dust, chemical-resistant
  - Compensation of misalignment errors
  - Noise free and light weight

### 标准规格 Standard specifications



产品编码 Part No.:

GIBR-K05-L-ES3

- 不锈钢球体  
Stainless steel ball
- 带锁定螺母 Lock nut
- 内径 Inner diameter
- K系列 Series
- R: 右旋 Right
- L: 左旋 Left

产品编码 Part No.	d <sub>1</sub> [mm]	d <sub>2</sub> [mm]	d <sub>3</sub> [mm]	W [mm]	B [mm]	l <sub>1</sub> [mm]	l <sub>2</sub> [mm]	h <sub>1</sub> [mm]	h <sub>2</sub> [mm]	C <sub>1</sub> [mm]	m [mm]	最大静态 抗拉强度 Max. static tensile strength		最大径向 静态负荷 Max. radial static load		最小 螺纹 深度 Min. thread depth	球体 最大扭矩 Max. tightening torque through ball [Nm]	重量 Weight [g]
												短期 Short- term [N]	长期 Long- term [N]	短期 Short- term [N]	长期 Long- term [N]			
GIBR-K06-L	6	20	M06	SW10	9	13.5	40	30	36.5	7	5.7	1400	700	300	150	20	10	4.5
GIBR-K08-L	8	24	M08	SW13	12	17	48	36	44.3	9	7.5	2100	1050	500	250	25	12	8.6
GIBR-K10-L	10	30	M10	SW15	14	22	58	43	52.2	10.5	8.4	3100	1550	800	400	30	20	14.1
GIBR-K10-L-F	10	30	M10x1.25	SW15	14	22	58	43	52.2	10.5	8.4	3100	1550	800	400	30	20	14.1
GIBR-K06-L-ES3	6	20	M06	SW10	9	13.5	40	30	36.5	7	5.7	1400	700	300	150	20	15	9.2
GIBR-K08-L-ES3	8	24	M08	SW13	12	17	48	36	44.3	9	7.5	2100	1050	500	250	25	40	17.6
GIBR-K10-L-ES3	10	30	M10	SW15	14	22	58	43	52.2	10.5	8.4	3100	1550	800	400	30	50	28.5
GIBR-K10-L-F-ES3	10	30	M10x1.25	SW15	14	22	58	43	52.2	10.5	8.4	3100	1550	800	400	30	50	28.5