

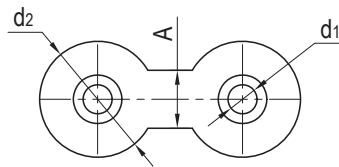
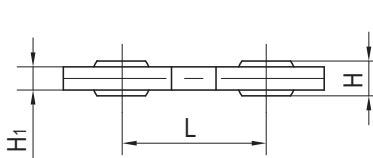
### GDB双杆端关节轴承 Double spherical bearings



#### 产品特性 Product features

- 球体采用高耐磨材料EPB15制成
- 连接器采用高强度和尺寸稳定性材料M163制成
- 自润滑、免维护
- 耐腐蚀，可用于液体介质环境
- 无噪音运行和不导电
- 可连接两个单元组件并消除中心误差
- 多种连接长度选择
- Spherical ball made of highly wear-resistant EPB15
- Connection rod made of high strength and shape-stable M163
- Maintenance-free dry operation
- Corrosion-resistant
- No noise and nonconductive
- Mechanical connector between two components
- Compensation of misalignment errors
- Multichoice distance between two components

#### 标准规格 Standard specifications



产品编码 Part No.:

GDB-04-25

— 中心距 Center distance  
— 内径 Inner diameter

产品编码 Part No.	d <sub>1</sub> E10 [mm]	d <sub>2</sub> [mm]	L [mm]	A [mm]	H [mm]	H <sub>1</sub> [mm]	最大静态抗拉强度 (短期) Max. static tensile strength (Short-term)		最大静态抗拉强度 (长期) Max. static tensile strength (Long-term)		最大调节 角度 Max. pivot angle	重量 Weight [g]
							径向 Radial [N]	轴向 Axial [N]	径向 Radial [N]	轴向 Axial [N]		
GDB-04-25	4	20	25	10	5	4	1100	1300	550	650	32°	3.5
GDB-04-50	4	20	50	10	5	4	1100	750	550	375	32°	4.8
GDB-04-75	4	20	75	10	5	4	1100	500	550	250	32°	6.1
GDB-05-25	5	20	25	10	6	4	1100	1300	550	650	37°	2.2
GDB-05-50	5	20	50	10	6	4	1100	750	550	375	37°	4.9
GDB-05-75	5	20	75	10	6	4	1100	500	550	250	37°	6.3
GDB-06-25	6	20	25	10	6	4	1100	1300	550	650	30°	3.4
GDB-06-50	6	20	50	10	6	4	1100	750	550	375	30°	4.8
GDB-06-75	6	20	75	10	6	4	1100	500	550	250	30°	3.4
GDB-08-60	8	30	60	15	8	7	3000	3500	1500	1750	20°	15.2
GDB-08-100	8	30	100	15	8	7	3000	1900	1500	950	20°	19.5
GDB-10-60	10	30	60	15	9	7	2500	3500	1250	1750	25°	15.3
GDB-10-100	10	30	100	15	9	7	2500	1900	1250	950	25°	19.4
GDB-12-60	12	30	60	15	10	7	2000	3500	1000	1750	25°	14.7
GDB-12-100	12	30	100	15	10	7	2500	1900	1000	950	25°	18.8