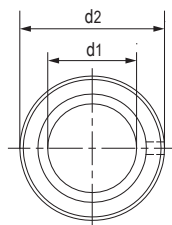
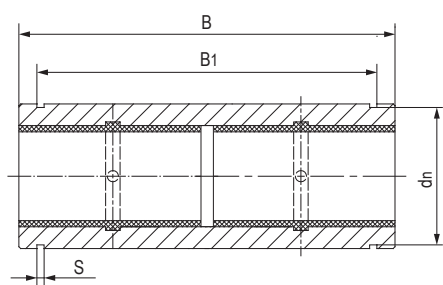


LIN-12RL 加长型塑料直线轴承 Long design plastic linear bearings



- 封闭式加长设计
 - 装配2个LIN-12滑动膜
 - 阳极氧化铝合金适配器
 - 卡簧轴向固定
 - 免维护、低噪音
 - 适用于污垢或灰尘环境
 - 使用温度-50℃/+90℃
- Closed design and increased the guide length
 - Assembled 2pcs liners LIN-12
 - Anodized aluminum adapter
 - Axial secured by circlips
 - Maintenance-free and low noise
 - Resistance to dirt and dust
 - Operation temperature -50℃/+90℃

标准规格 Standard specifications



产品编码 Part No.:

LIN-12RL-10

轴承内径 Inner diameter

加长型设计保持器 Long design housing

 LIN-12标准滑动膜
Standard liners LIN-12

座孔 Housing: H7 轴 Shaft: h6-h9

产品编码 Part No.	d ₁ [mm]	公差 Tolerance [mm]	d ₂ [mm]	d _n [mm]	B [mm]	B ₁ [mm]	S [mm]
LIN-12RL-10	10	+0.03/+0.088	19	17.5	55	44	1.3
LIN-12RL-12	12	+0.03/+0.088	22	20.5	57	46	1.3
LIN-12RL-16	16	+0.03/+0.088	26	24.2	70	53	1.6
LIN-12RL-20	20	+0.03/+0.091	32	29.6	80	61	1.6
LIN-12RL-25	25	+0.03/+0.091	40	36.5	112	82	1.85
LIN-12RL-30	30	+0.03/+0.110	47	43.5	123	89	1.85

产品编码 Part No.	轴径 Shaft [mm]	座孔 Housing [mm] H7	公差 Tolerance [mm]	F max. [N] 最大动载荷 Dynamic Load P=5MPa	F max. [N] 最大静载荷 Static Load P=35MPa	重量 Weight [g]
LIN-12RL-10	10	19	0/+0.021	1300	9100	26
LIN-12RL-12	12	22	0/+0.021	1680	11600	33
LIN-12RL-16	16	26	0/+0.021	2400	16800	50
LIN-12RL-20	20	32	0/+0.025	3000	21000	80
LIN-12RL-25	25	40	0/+0.025	5000	35000	189
LIN-12RL-30	30	47	0/+0.025	7500	52500	269