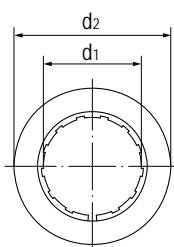
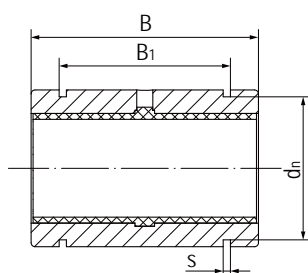


LIN-11R 封闭式直线轴承 Linear bearings, closed



- 封闭式标准长设计
 - 装配LIN-11滑动膜
 - 阳极氧化铝合金适配器
 - 卡簧轴向固定
 - 免维护、低噪音
 - 适用于污垢或灰尘环境
 - 使用温度-50℃/+90℃
- Closed and long design
 - Assembled LIN-11 liners
 - Anodized aluminum adapter
 - Axial secured by circlips
 - Maintenance-free and low noise
 - Resistance to dirt and dust
 - Operation temperature -50℃/+90℃

标准规格 Standard specifications



产品编码 Part No.:

LIN-11R-10

- 内径 Inner diameter
- 封闭式保持器 Closed housing
- LIN-11标准滑动膜
Standard liners LIN-11

座孔 Housing: H7 轴 Shaft: h6-h9

| 产品编码 Part No. | d ₁ [mm] | 公差 Tolerance [mm] | d ₂ h7 [mm] | B h10 [mm] | B ₁ H10 [mm] | d _n h10 [mm] | s H10 [mm] |
|------------------|------------------------|----------------------|---------------------------|---------------|----------------------------|----------------------------|---------------|
| LIN-11R-06B | 6 | +0.020/+0.068 | 12 | 22 | 14.2 | 11.5 | 1.1 |
| LIN-11R-08B | 8 | +0.025/+0.083 | 16 | 25 | 16.2 | 15.2 | 1.1 |
| LIN-11R-10 | 10 | +0.030/+0.088 | 19 | 29 | 21.6 | 17.5 | 1.3 |
| LIN-11R-12 | 12 | +0.030/+0.088 | 22 | 32 | 22.6 | 20.5 | 1.3 |
| LIN-11R-16 | 16 | +0.030/+0.088 | 26 | 36 | 24.6 | 24.2 | 1.3 |
| LIN-11R-20 | 20 | +0.030/+0.091 | 32 | 45 | 31.2 | 29.6 | 1.6 |
| LIN-11R-25 | 25 | +0.030/+0.091 | 40 | 58 | 43.7 | 36.5 | 1.85 |
| LIN-11R-30 | 30 | +0.040/+0.110 | 47 | 68 | 51.7 | 43.5 | 1.85 |
| LIN-11R-40 | 40 | +0.040/+0.115 | 62 | 80 | 60.3 | 57.8 | 2.15 |
| LIN-11R-50 | 50 | +0.050/+0.130 | 75 | 100 | 77.3 | 70.5 | 2.65 |

| 产品编码 Part No. | 轴径 Shaft [mm] | 座孔 Housing [mm] H7 | 公差 Tolerance [mm] | F max. [N] 最大动载荷 Dynamic Load P=5MPa | F max. [N] 最大静载荷 Static Load P=35MPa | 重量 Weight [g] |
|------------------|------------------|-----------------------|----------------------|--|--|------------------|
| LIN-11R-06B | 6 | 12 | 0/+0.018 | 525 | 3675 | 5 |
| LIN-11R-08B | 8 | 16 | 0/+0.018 | 960 | 6720 | 9 |
| LIN-11R-10 | 10 | 19 | 0/+0.021 | 725 | 5075 | 12 |
| LIN-11R-12 | 12 | 22 | 0/+0.021 | 960 | 6720 | 20 |
| LIN-11R-16 | 16 | 26 | 0/+0.021 | 1440 | 10080 | 28 |
| LIN-11R-20 | 20 | 32 | 0/+0.025 | 2250 | 15750 | 50 |
| LIN-11R-25 | 25 | 40 | 0/+0.025 | 3625 | 25375 | 104 |
| LIN-11R-30 | 30 | 47 | 0/+0.025 | 5100 | 35700 | 163 |
| LIN-11R-40 | 40 | 62 | 0/+0.030 | 8000 | 56000 | 341 |
| LIN-11R-50 | 50 | 75 | 0/+0.030 | 9000 | 87500 | 589 |