



材料结构 Material structure


CSB-FWB®材料以高强度玻璃纤维增强高温环氧树脂作为承载层，以特种纤维和PTFE纤维作为滑动层，使得轴承在高载低速工况条件下具有优良的耐磨性和很低的摩擦系数，甚至可以在长时间不加油的情况下仍能发挥良好的自润滑特性和很高的轴承比压。由此我们开发了可以适合不同工况下的多种自润材料。

The back material of CSB-FWB® materials is high strength glass fiber with epoxy resin and the lubricating layer of it is PTFE wound fiber or special lubricating fiber. Therefore, this special structure performs an outstanding anti-wear feature and low friction coefficient under high load and low speed condition. Furthermore, this absolutely new idea gives better solution for high load and excellent wear resistance possibility.

典型特征 Typical features

- 极高的动承载能力，最高140Mpa;
- 优秀的耐磨性能;
- 极低的摩擦系数，摩擦系数<0.12;
- 长期干运行，不推荐加油。
- Very high load capacity, Max. 140Mpa;
- Very good chemical resistance;
- Lower friction and good wear properties. Friction coefficient<0.12;
- Long time dry operation without oil.

技术数据表 Technical data table

材料性能 Material properties	标准 Standard	单位 Unit							
			CRM	CRB	CRG	CRH	CRP	CRW	CRF
密度 Density	ISO1183	g/cm ³	1.95	1.95	1.95	1.95	1.95	1.95	1.30
最大吸水率 Max. water absorption	ISO62	%	0.1	0.1	0.1	0.1	0.1	0.1	0.5
极限PV值 Max. PV (dry)	ITS026	N/mm ² ×m/s	1.8	1.8	2.0	2.0	1.6	1.8	1.2
摩擦系数 Coefficient of friction	ITS025	μ	0.05~0.15	0.03~0.12	0.03~0.12	0.05~0.15	0.02~0.12	0.02 ~ 0.10	0.08~0.30
连续运行温度 Long-term application temperature	ITS029	°C	+160	+160	+160	+200	+160	+100	+130
短时运行温度 Short-term application temperature	ITS029	°C	+180	+180	+180	+260	+180	+160	+160
最低运行温度 Lowest application temperature	ITS029	°C	-100	-100	-100	-100	-100	-100	-40
最高速度 Max. Speed	ITS032	m/s	0.20	0.20	0.20	0.16	0.40	0.40	0.13
抗压强度 Compressive strength	ITS033	MPa	420	420	420	620	420	420	300
最大静载荷 Max. static load	ITS027	MPa	240	240	240	420	240	240	150
最大动载荷 Max. dynamic load	ITS028	MPa	120	140	160	160	30	120	45
邵氏硬度 Shore hardness	ISO868	D	95	95	95	95	95	95	90
线性热膨胀系数(25 ~ 150°C) Linear coef. of thermal Expansion	ISO11359	10 ⁻⁶ ×K ⁻¹	13	13	13	13	13	13	40

*ITS: CSB内部测试标准 CSB company's internal test standards.

**除非特殊说明测试温度为23°C Test temperatures are 23°C unless otherwise stated.

轴承摩擦系数 Friction coefficient

缠绕轴承的摩擦系数为0.03 ~ 0.12，影响摩擦系数的主要因素有承载、运动方式、速度以及相配轴的表面粗糙度等。

图1显示了缠绕轴承在PV旋转载荷下的摩擦系数随着载荷的升高而降低。

Friction Coefficient of filament Bearing is 0.03 ~ 0.12. The main factors affect the Friction Coefficient are Load, Moving method, Speed and Roughness of mating surfaces. Graph 1 shows the friction coefficient is going down while load is increasing under the rotation method.

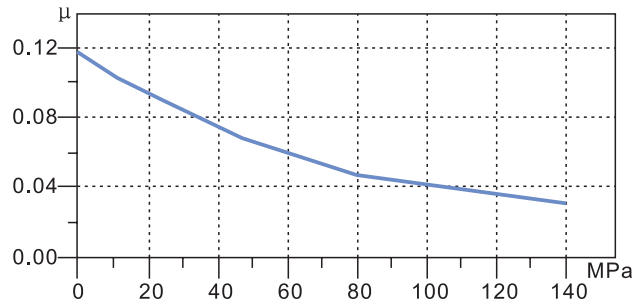


图1: 纤维缠绕轴承的载荷与摩擦系数曲线
Graph 1: Load vs Friction Coefficient

轴承规格: CRB-6070-50	Specification: CRB-6070-50
轴: 45# HRC50, Ra=0.4	Shaft: 45# HRC50, Ra=0.4
轴承载荷: 20~140MPa	Load: 20~140MPa
速度: 1.0m/min	Speed: 1.0m/min
润滑: 干	Lubricate: Dry

轴承的磨损 The anti-wear property

轴承磨损的影响因素有承载、运动方式、速度以及相配轴的表面粗糙度等；图2说明了缠绕轴承在50MPa载荷、室温的条件下摇摆运动中的磨损情况。根据图表我们可以看出在最初的时间内轴承磨损很快，在这段时间内，内衬中的润滑物质逐渐向相配轴上转移并均匀分布在运动方向上，从而形成光滑的摩擦表面，之后保持很长时间的稳定不磨损阶段。

The main factors affect the anti-wear property are the load, moving method, speed and roughness of mating surfaces. Graph 2 shows the bearing wear off under room temperature with the load of 50MPa when the bearing is swinging. It is found the wear off increases sharply during the initial running-in while the lubricant is transferred from the inner liner and a smooth surface is created there of to form the lubricating surface. After running-in period, it will maintain stable without wear off.

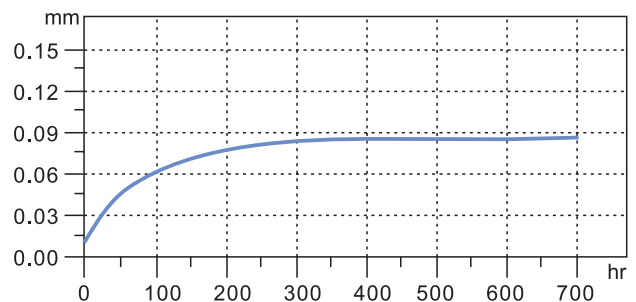
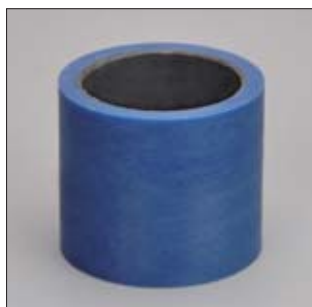


图2: 纤维缠绕轴承工作时间与磨损量的曲线
Graph 2: Duration vs Wear off amount

轴承规格: CRB-4050-30	Specification: CRB-4050-30
轴: 45# HRC50, Ra=0.4	Shaft: 45# HRC50, Ra=0.4
轴承载荷: 50MPa	Load: 50MPa
速度: 1.0m/min, ±45°	Speed: 1.0m/min, ±45°
润滑: 干	Lubrication: Dry

CRM 通用型缠绕轴承 Universal type bearings



■ 轴承材料结构

内衬：以PTFE纤维与高强度纤维填充内部润滑剂与高温环氧树脂作为滑动层；
衬背：以高强度玻璃纤维增强高温环氧树脂作为承载层。

■ Material structure

Sliding layer: Continuous wound PTFE and high-strength fibers encapsulated in an internally lubricated, high temperature filled epoxy resin.

Backing: Continuous wound glass fiber encapsulated in a high temperature epoxy resin.

轴承技术数据 Technical data

材料性能 Material properties	标准 Standard	单位 Unit	CRM
密度 Density	ISO1183	g/cm ³	1.95
最大吸水率 Max. water absorption	ISO62	%	0.1
极限PV值 Max. PV (dry)	ITS026	N/mm ² ×m/s	1.8
摩擦系数 Coefficient of friction	ITS025	μ	0.05~0.15
连续运行温度 Long-term application temperature	ITS029	°C	+160
短时运行温度 Short-term application temperature	ITS029	°C	+180
最低运行温度 Lowest application temperature	ITS029	°C	-100
最高速度 Max. Speed	ITS032	m/s	0.2
抗压强度 Compressive strength	ITS033	MPa	420
最大静载荷 Max. static load	ITS027	MPa	240
最大动载荷 Max. dynamic load	ITS028	MPa	120
邵氏硬度 Shore hardness	ISO868	D	95
线性热膨胀系数(25 ~ 150°C) Linear coef. of thermal Expansion	ISO11359	10 ⁻⁶ ×K ⁻¹	13

*ITS: CSB内部测试标准 CSB company's internal test standards.

**除非特殊说明测试温度为23°C Test temperatures are 23°C unless otherwise stated.

典型特征 Typical features

很好的耐磨性能
高承载能力
优良的耐污性能
较好的化学抗性



Very good friction and wear properties
High load capacity
Excellent contamination resistance
Good chemical resistance

典型应用 Typical applications

升降作业机械
油缸耳环轴套
物流机械
包装机械

Boom lifts, Scissor lifts
Hydraulic cylinder pivots
Handling machinery
Packager machinery

CRB 标准型缠绕轴承 Standard type bearings



■ 轴承材料结构

内衬：以PTFE纤维与高强度纤维填充内部润滑剂与高温环氧树脂作为滑动层；
衬背：以高强度玻璃纤维增强高温环氧树脂作为承载层。

■ Material structure

Sliding layer: Continuous wound PTFE and high-strength fibers encapsulated in an internally lubricated, high temperature filled epoxy resin.

Backing: Continuous wound glass fiber encapsulated in a high temperature epoxy resin.

轴承技术数据 Technical data

材料性能 Material properties	标准 Standard	单位 Unit	CRB
密度 Density	ISO1183	g/cm ³	1.95
最大吸水率 Max. water absorption	ISO62	%	0.1
极限PV值 Max. PV (dry)	ITS026	N/mm ² ×m/s	1.8
摩擦系数 Coefficient of friction	ITS025	μ	0.03~0.12
连续运行温度 Long-term application temperature	ITS029	°C	+160
短时运行温度 Short-term application temperature	ITS029	°C	+180
最低运行温度 Lowest application temperature	ITS029	°C	-100
最高速度 Max. Speed	ITS032	m/s	0.2
抗压强度 Compressive strength	ITS033	MPa	420
最大静载荷 Max. static load	ITS027	MPa	240
最大动载荷 Max. dynamic load	ITS028	MPa	140
邵氏硬度 Shore hardness	ISO868	D	95
线性热膨胀系数(25 ~ 150°C) Linear coef. of thermal Expansion	ISO11359	10 ⁻⁶ ×K ⁻¹	13

*ITS: CSB内部测试标准 CSB company's internal test standards.

**除非特殊说明测试温度为23°C Test temperatures are 23°C unless otherwise stated.

典型特征 Typical features

高承载能力
极好的耐磨特性
耐腐蚀能力强
低摩擦系数
不推荐加油



High load capacity
Excellent wear resistance
Very good chemical resistance
Lower friction coefficient
Oil forbidden

典型应用 Typical applications

油缸耳轴套
举升机械
起重机械、物料机械
建筑机械
港口机械
包装机械

Hydraulic cylinder pivots
Construction machinery arm bushes
Boom lifts, scissor lifts
Cranes, material handling equipment
Port machinery
Package machine

CRG 高承载型缠绕轴承 High load type bearings



■ 轴承材料结构

内衬：以PTFE纤维与高强度纤维填充内部润滑剂与高温高强环氧树脂作为滑动层；
衬背：以高强度玻璃纤维增强高温高强环氧树脂作为承载层。

■ Material structure

Sliding layer: Continuous wound PTFE and high-strength fibers encapsulated in an internally lubricated, high-temperature and high-strength filled epoxy resin.

Backing: Continuous wound glass fiber encapsulated in a high-temperature and high-strength epoxy resin.

轴承技术数据 Technical data

材料性能 Material properties	标准 Standard	单位 Unit	CRG
密度 Density	ISO1183	g/cm ³	1.95
最大吸水率 Max. water absorption	ISO62	%	0.1
极限PV值 Max. PV (dry)	ITS026	N/mm ² ×m/s	2
摩擦系数 Coefficient of friction	ITS025	μ	0.03~0.12
连续运行温度 Long-term application temperature	ITS029	°C	+160
短时运行温度 Short-term application temperature	ITS029	°C	+180
最低运行温度 Lowest application temperature	ITS029	°C	-100
最高速度 Max. Speed	ITS032	m/s	0.2
抗压强度 Compressive strength	ITS033	MPa	420
最大静载荷 Max. static load	ITS027	MPa	240
最大动载荷 Max. dynamic load	ITS028	MPa	160
邵氏硬度 Shore hardness	ISO868	D	95
线性热膨胀系数(25 ~ 150°C) Linear coef. of thermal Expansion	ISO11359	10 ⁻⁶ ×K ⁻¹	13

*ITS: CSB内部测试标准 CSB company's internal test standards.

**除非特殊说明测试温度为23°C Test temperatures are 23°C unless otherwise stated.

典型特征 Typical features

极高的动承载能力
极好的耐磨特性
较强的耐腐蚀能力
低摩擦系数
不推荐加油



Very high load capacity
Excellent wear resistance
Very good chemical resistance
Low friction coefficient
Oil forbidden

典型应用 Typical applications

油缸耳轴套
建筑机械曲肘轴套
升降机械
起重机械、物料机械
港口机械
包装机械

Hydraulic cylinder pivots
Construction machinery arm bushes
Boom lifts, scissor lifts
Cranes, material handling equipment
Port machinery
Package machine

CRH 标准型缠绕轴承 Standard type bearings



■ 轴承材料结构

内衬：以PTFE纤维与高强度纤维填充内部润滑剂与高温环氧树脂作为滑动层；
衬背：以高强度玻璃纤维增强高温环氧树脂作为承载层。

■ Material structure

Sliding layer: Continuous wound PTFE and high-strength fibers encapsulated in an internally lubricated, high temperature filled epoxy resin.

Backing: Continuous wound glass fiber encapsulated in a high temperature epoxy resin.

轴承技术数据 Technical data

材料性能 Material properties	标准 Standard	单位 Unit	CRH
密度 Density	ISO1183	g/cm ³	1.95
最大吸水率 Max. water absorption	ISO62	%	0.1
极限PV值 Max. PV (dry)	ITS026	N/mm ² ×m/s	2.0
摩擦系数 Coefficient of friction	ITS025	μ	0.05~0.15
连续运行温度 Long-term application temperature	ITS029	°C	+200
短时运行温度 Short-term application temperature	ITS029	°C	+260
最低运行温度 Lowest application temperature	ITS029	°C	-100
最高速度 Max. Speed	ITS032	m/s	0.16
抗压强度 Compressive strength	ITS033	MPa	620
最大静载荷 Max. static load	ITS027	MPa	420
最大动载荷 Max. dynamic load	ITS028	MPa	160
邵氏硬度 Shore hardness	ISO868	D	95
线性热膨胀系数(25 ~ 150°C) Linear coef. of thermal Expansion	ISO11359	10 ⁻⁶ ×K ⁻¹	13

*ITS: CSB内部测试标准 CSB company's internal test standards.

**除非特殊说明测试温度为23°C Test temperatures are 23°C unless otherwise stated.

典型特征 Typical features

极高的动承载能力
很高的抗冲击性能
极好的耐磨特性
较强的耐腐蚀能力
不推荐加油



Very high load capacity
High anti-impact performance
Extremely Wear resistance
Strong corrosion resistance
Oil forbidden

典型应用 Typical applications

油缸耳轴套
举升机械
起重机械、物料机械
建筑机械
港口机械
包装机械

Hydraulic cylinder pivots
Construction machinery arm bushes
Boom lifts, scissor lifts
Cranes, material handling equipment
Port machinery
Package machine

CRP 高速型缠绕轴承 High speed type bearings



■ 轴承材料结构

内衬：以纤维填充PTFE耐磨带作为滑动层；
衬背：以高强度玻璃纤维增强高温环氧树脂作为承载层。

■ Material structure

Sliding layer: Fibers and PTFE compound tape as internally lubricating layer.
Backing: Continuous wound glass fiber encapsulated in a high temperature epoxy resin.

轴承技术数据 Technical data

材料性能 Material properties	标准 Standard	单位 Unit	CRP
密度 Density	ISO1183	g/cm ³	1.95
最大吸水率 Max. water absorption	ISO62	%	0.1
极限PV值 Max. PV (dry)	ITS026	N/mm ² ×m/s	1.6
摩擦系数 Coefficient of friction	ITS025	μ	0.02~0.12
连续运行温度 Long-term application temperature	ITS029	°C	+160
短时运行温度 Short-term application temperature	ITS029	°C	+180
最低运行温度 Lowest application temperature	ITS029	°C	-100
最高速度 Max. Speed	ITS032	m/s	0.4
抗压强度 Compressive strength	ITS033	MPa	420
最大静载荷 Max. static load	ITS027	MPa	240
最大动载荷 Max. dynamic load	ITS028	MPa	30
邵氏硬度 Shore hardness	ISO868	D	95
线性热膨胀系数(25 ~ 150°C) Linear coef. of thermal Expansion	ISO11359	10 ⁻⁶ ×K ⁻¹	13

*ITS: CSB内部测试标准 CSB company's internal test standards.

**除非特殊说明测试温度为23°C Test temperatures are 23°C unless otherwise stated.

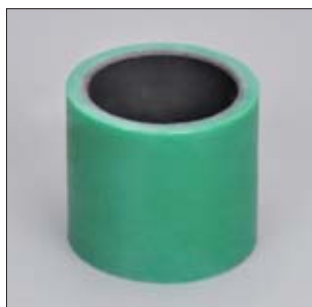
典型特征 Typical features

较低的摩擦系数	Low friction coefficient
较高的运动速度	High motion speed
特别适用于往复运动	Suitable for linear motion
内孔可机加工	Inside bore machineable
允许加油	Oil allowed

典型应用 Typical applications

球阀、蝶阀轴套	Ball and butterfly trunnion bearing
气泵轴套	Air pump guide bushes
伺服电机	Servo-motor bearings
塑胶机械格林柱导套	Water dam bearings
水利机械轴套	Tie-bar guide bearing
油压机械导套	Hydraulic pressure machinery

CRW 水下型缠绕轴承 Water-lub type bearings



■ 轴承材料结构

内衬：以PTFE纤维与高强度纤维填充内部水下润滑剂与高温环氧树脂作为滑动层；
衬背：以高强度玻璃纤维增强高温环氧树脂作为承载层。

■ Material structure

Sliding layer: Continuous wound PTFE and high-strength fibers encapsulated in an internally water lubricated, high temperature filled epoxy resin.

Backing: Continuous wound glass fiber encapsulated in a high temperature epoxy resin.

轴承技术数据 Technical data

材料性能 Material properties	标准 Standard	单位 Unit	CRW
密度 Density	ISO1183	g/cm ³	1.95
最大吸水率 Max. water absorption	ISO62	%	0.1
极限PV值 Max. PV (dry)	ITS026	N/mm ² ×m/s	1.8
摩擦系数 Coefficient of friction	ITS025	μ	0.02 ~ 0.10
连续运行温度 Long-term application temperature	ITS029	°C	+100
短时运行温度 Short-term application temperature	ITS029	°C	+160
最低运行温度 Lowest application temperature	ITS029	°C	-100
最高速度 Max. Speed	ITS032	m/s	0.4
抗压强度 Compressive strength	ITS033	MPa	420
最大静载荷 Max. static load	ITS027	MPa	240
最大动载荷 Max. dynamic load	ITS028	MPa	120
邵氏硬度 Shore hardness	ISO868	D	95
线性热膨胀系数(25 ~ 150°C) Linear coef. of thermal Expansion	ISO11359	10 ⁻⁶ ×K ⁻¹	13

*ITS: CSB内部测试标准 CSB company's internal test standards.

**除非特殊说明测试温度为23°C Test temperatures are 23°C unless otherwise stated.

典型特征 Typical features

极好的水下耐磨性能
高承载能力
优良的耐污性能
较好的化学抗性
非常低的摩擦系数

Excellent anti-wear property under water
High load capacity
Excellent dirty resistance
Good chemical resistance
Very lowest friction coefficient

典型应用 Typical applications

船舶机械
港口机械
水电闸门
清洗设备

Marine machinery
Port machinery
Water gate machinery
Cleaning equipment

CRF 多用型缠绕轴承 Multi-role type bearings



■ 轴承材料结构

CRF轴承是采用特种高强树脂和高强度纤维织物浸渍缠绕而成，并填充专用内部耐磨剂。

■ Material structure

Materials: Continuous wound high-strength fiber textile encapsulated in a special internally lubricated, high-strength filled resin.

轴承技术数据 Technical data

材料性能 Material properties	标准 Standard	单位 Unit	CRF
密度 Density	ISO1183	g/cm ³	1.3
最大吸水率 Max. water absorption	ISO62	%	0.5
极限PV值 Max. PV (dry)	ITS026	N/mm ² ×m/s	1.2
摩擦系数 Coefficient of friction	ITS025	μ	0.08~0.30
连续运行温度 Long-term application temperature	ITS029	°C	+130
短时运行温度 Short-term application temperature	ITS029	°C	+160
最低运行温度 Lowest application temperature	ITS029	°C	-40
最高速度 Max. Speed	ITS032	m/s	0.13
抗压强度 Compressive strength	ITS033	MPa	300
最大静载荷 Max. static load	ITS027	MPa	150
最大动载荷 Max. dynamic load	ITS028	MPa	45
邵氏硬度 Shore hardness	ISO868	D	90
线性热膨胀系数(25 ~ 150°C) Linear coef. of thermal Expansion	ISO11359	10 ⁻⁶ ×K ⁻¹	40

*ITS: CSB内部测试标准 CSB company's internal test standards.

**除非特殊说明测试温度为23°C Test temperatures are 23°C unless otherwise stated.

典型特征 Typical features

特别适用于油和水润滑应用
极好流体润滑耐磨性
内外径可机加工
允许加油

Suitable for oil and water lubricating applications
Excellent wear resistance in liquids
Completely machinable
Oil allowed

典型应用 Typical applications

水力机械轴套
拉杆轴套
包装机械
气泵轴套
伺服电机

Hydraulic machinery bearing
Tie-bar bearing
Package machine
Air pump guide bushes
Servo-motor bearings

CSB-FWB® 纤维缠绕轴承化学抗性表 Chemical resistance table

化学名 Chem	CRM	CRB	CRG	CRH	CRP	CRW	CRF
醋酸10% Acetic 10%	●	●	●	●	●	●	●
砷10% Arsenic 10%	●	●	●	●	●	●	●
硼酸10% Boric 10%	●	●	●	●	●	●	●
碳10% Carbonic 10%	●	●	●	●	●	●	●
柠檬酸10% Citric 10%	●	●	●	●	●	●	●
盐酸10% Hydrochloric 10%	●	●	●	●	●	●	●
水电氟10% Hydro-fluoric 10%	●	●	●	●	●	●	●
硝酸10% Nitric 10%	●	●	●	●	●	●	●
硫酸10% Sulfuric 10%	●	●	●	●	●	●	●
铝10% Aluminum 10%	●	●	●	●	●	●	●
钙10% Calcium 10%	●	●	●	●	●	●	●
镁10% Magnesium 10%	●	●	●	●	●	●	●
氢氧化钾10% Potassium Hydroxide 10%	●	●	●	●	●	●	●
氢氧化钠10% Sodium Hydroxide 10%	●	●	●	●	●	●	●
三氯化铝 Aluminum Chloride	●	●	●	●	●	●	●
硝酸铝 Aluminum Nitrate	●	●	●	●	●	●	●
硫酸铝 Aluminum Sulfate	●	●	●	●	●	●	●
氯化钙 Calcium Chloride	●	●	●	●	●	●	●
三氯化铁 Ferric Chloride	●	●	●	●	●	●	●
碳酸镁 Magnesium Carbonate	●	●	●	●	●	●	●
氯化镁 Magnesium Chloride	●	●	●	●	●	●	●
硫酸镁 Magnesium Sulfate	●	●	●	●	●	●	●
醋酸钠 Sodium Acetate	●	●	●	●	●	●	●
碳酸氢钠 Sodium Bicarbonate	●	●	●	●	●	●	●
硫酸氢钠 Sodium Bisulfate	●	●	●	●	●	●	●
氯化钠 Sodium Chloride	●	●	●	●	●	●	●
硝酸钠 Sodium Nitrate	●	●	●	●	●	●	●
硫酸锌 Zinc Sulfate	●	●	●	●	●	●	●
丙酮醇 Acetol	●	●	●	●	●	●	●
烯丙基 Allyl	●	●	●	●	●	●	●
丁基 Butyl	●	●	●	●	●	●	●
甲酸乙酯 Ethyl	●	●	●	●	●	●	●
异丁基 Iso Butyl	●	●	●	●	●	●	●
异丙基 Iso Propyl	●	●	●	●	●	●	●
甲基 Methyl	●	●	●	●	●	●	●
丙烷基 Propyl	●	●	●	●	●	●	●
丙酮 Acetone	●	●	●	●	●	●	●
苯 Benzene	●	●	●	●	●	●	●

化学名 Chem	CRM	CRB	CRG	CRH	CRP	CRW	CRF
四氯化碳 Carbon Tetrachloride	●	●	●	●	●	●	●
二氯甲烷 Methylene Chloride	●	●	●	●	●	●	●
甲乙酮 Methyl Ethyl Ketone	●	●	●	●	●	●	●
石脑油 Naphtha	●	●	●	●	●	●	●
甲苯 Toluol	●	●	●	●	●	●	●
三氯乙烷 Trichlorethane	●	●	●	●	●	●	●
棉籽 Cottonseed	●	●	●	●	●	●	●
原油 Crude Oil	●	●	●	●	●	●	●
液压油 Hydraulic Fluids	●	●	●	●	●	●	●
亚麻籽油 Linseed Oil	●	●	●	●	●	●	●
机油 Motor Oil	●	●	●	●	●	●	●
变速箱油 Transmission Fluids	●	●	●	●	●	●	●
柴油 Diesel	●	●	●	●	●	●	●
汽油 Gasoline	●	●	●	●	●	●	●
喷气燃料 Jet Fuel	●	●	●	●	●	●	●
煤油 Kerosene	●	●	●	●	●	●	●
乙炔溴 Acetylene Bromine	●	●	●	●	●	●	●
丁烷 Butane	●	●	●	●	●	●	●
二氧化碳 Carbon Dioxide	●	●	●	●	●	●	●
氯 Chlorine	●	●	●	●	●	●	●
醚 Ethers	●	●	●	●	●	●	●
氟 Fluorine	●	●	●	●	●	●	●
氢 Hydrogen	●	●	●	●	●	●	●
天然气 Natural Gas	●	●	●	●	●	●	●
氮 Nitrogen	●	●	●	●	●	●	●
臭氧 Ozone	●	●	●	●	●	●	●
丙烷 Propane	●	●	●	●	●	●	●
二氧化硫 Sulfur Dioxide	●	●	●	●	●	●	●
无水氨 Anhydrous Ammonia	●	●	●	●	●	●	●
洗涤剂 Detergents	●	●	●	●	●	●	●
乙二醇 Ethylene Glycol	●	●	●	●	●	●	●
甲醛 Formaldehyde	●	●	●	●	●	●	●
氟利昂 Freon	●	●	●	●	●	●	●
过氧化氢 Hydrogen Peroxide	●	●	●	●	●	●	●
石灰 Lime	●	●	●	●	●	●	●
水 Water	●	●	●	●	●	●	●

● 完全抵抗 Resistant
● 无抵抗 Not Resistant

CSB-FWB® 纤维缠绕轴承尺寸表(壁厚2.5mm) Standard specifications (wall 2.5mm)

可供规格 Specifications:

产品编码 Part No.:

CRB-20 25-30

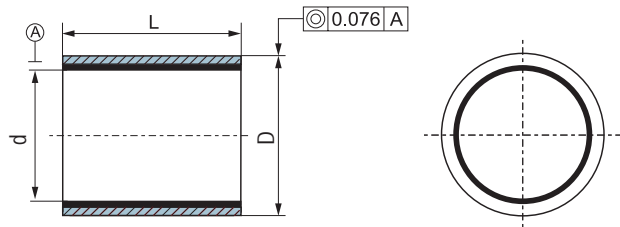
长度 Length

外径 Outer diameter

内径 Inner diameter

材料 Materials:

CRM, CRB, CRG, CRH, CRP, CRW, CRF



长度公差表		L		
Length tolerance table		≤75 mm	> 75 to < 150 mm	≥150 mm
d	≤75 mm	-0.50 mm	-1.00 mm	-1.50 mm
	> 75 to ≤120 mm	-1.00 mm	-1.00 mm	-1.50 mm
	> 120 to ≤150 mm	-1.00 mm	-1.50 mm	-1.50 mm

产品编码 Part No.	轴承尺寸 Bearing Size		推荐尺寸 Recommend		装配间隙 Assembly Interference	标准长度 Standard Length L
	内径 d	外径 D	轴 Shaft D _s h7	孔 Housing H7 D _h		
CRB-2025-L	20 ^{+0.200} / _{+0.120}	25 ^{+0.100} / _{+0.050}	20 ⁰ / _{-0.021}	25 ^{+0.021} / ₀	0.025-0.096	15、20、30
CRB-2227-L	22 ^{+0.200} / _{+0.120}	27 ^{+0.100} / _{+0.050}	22 ⁰ / _{-0.021}	27 ^{+0.021} / ₀	0.025-0.096	15、20、30
CRB-2530-L	25 ^{+0.200} / _{+0.120}	30 ^{+0.100} / _{+0.050}	25 ⁰ / _{-0.021}	30 ^{+0.021} / ₀	0.025-0.096	20、30、40
CRB-2833-L	28 ^{+0.200} / _{+0.120}	33 ^{+0.100} / _{+0.050}	28 ⁰ / _{-0.021}	33 ^{+0.025} / ₀	0.025-0.100	20、30、40
CRB-3035-L	30 ^{+0.200} / _{+0.120}	35 ^{+0.100} / _{+0.050}	30 ⁰ / _{-0.021}	35 ^{+0.025} / ₀	0.025-0.100	20、30、40
CRB-3540-L	35 ^{+0.200} / _{+0.120}	40 ^{+0.100} / _{+0.050}	35 ⁰ / _{-0.025}	40 ^{+0.025} / ₀	0.025-0.100	30、40、50
CRB-4045-L	40 ^{+0.200} / _{+0.120}	45 ^{+0.100} / _{+0.050}	40 ⁰ / _{-0.025}	45 ^{+0.025} / ₀	0.025-0.100	30、40、60
CRB-4550-L	45 ^{+0.230} / _{+0.130}	50 ^{+0.105} / _{+0.055}	45 ⁰ / _{-0.025}	50 ^{+0.025} / ₀	0.025-0.105	30、40、60
CRB-5055-L	50 ^{+0.230} / _{+0.130}	55 ^{+0.105} / _{+0.055}	50 ⁰ / _{-0.025}	55 ^{+0.030} / ₀	0.025-0.105	40、50、60
CRB-5560-L	55 ^{+0.245} / _{+0.145}	60 ^{+0.120} / _{+0.070}	55 ⁰ / _{-0.030}	60 ^{+0.030} / ₀	0.040-0.120	40、55、70
CRB-6065-L	60 ^{+0.245} / _{+0.145}	65 ^{+0.120} / _{+0.070}	60 ⁰ / _{-0.030}	65 ^{+0.030} / ₀	0.040-0.120	40、60、80
CRB-6570-L	65 ^{+0.245} / _{+0.145}	70 ^{+0.120} / _{+0.070}	65 ⁰ / _{-0.030}	70 ^{+0.030} / ₀	0.040-0.120	50、60、80
CRB-7075-L	70 ^{+0.245} / _{+0.145}	75 ^{+0.120} / _{+0.070}	70 ⁰ / _{-0.030}	75 ^{+0.030} / ₀	0.040-0.120	50、70、90
CRB-7580-L	75 ^{+0.275} / _{+0.175}	80 ^{+0.120} / _{+0.070}	75 ⁰ / _{-0.030}	80 ^{+0.030} / ₀	0.040-0.125	50、70、90
CRB-8085-L	80 ^{+0.275} / _{+0.175}	85 ^{+0.125} / _{+0.075}	80 ⁰ / _{-0.030}	85 ^{+0.035} / ₀	0.040-0.125	60、80、100
CRB-8590-L	85 ^{+0.275} / _{+0.175}	90 ^{+0.125} / _{+0.075}	85 ⁰ / _{-0.035}	90 ^{+0.035} / ₀	0.040-0.125	60、80、100
CRB-9095-L	90 ^{+0.275} / _{+0.175}	95 ^{+0.125} / _{+0.075}	90 ⁰ / _{-0.035}	95 ^{+0.035} / ₀	0.050-0.135	60、80、120
CRB-95100-L	95 ^{+0.310} / _{+0.185}	100 ^{+0.125} / _{+0.075}	95 ⁰ / _{-0.035}	100 ^{+0.035} / ₀	0.050-0.135	60、80、120
CRB-100105-L	100 ^{+0.310} / _{+0.185}	105 ^{+0.125} / _{+0.075}	100 ⁰ / _{-0.035}	105 ^{+0.035} / ₀	0.050-0.135	80、100、120
CRB-110115-L	110 ^{+0.315} / _{+0.190}	115 ^{+0.135} / _{+0.085}	110 ⁰ / _{-0.035}	115 ^{+0.035} / ₀	0.050-0.140	80、100、120
CRB-120125-L	120 ^{+0.340} / _{+0.215}	125 ^{+0.135} / _{+0.085}	120 ⁰ / _{-0.035}	125 ^{+0.040} / ₀	0.050-0.165	100、120、150
CRB-130135-L	130 ^{+0.340} / _{+0.215}	135 ^{+0.165} / _{+0.090}	130 ⁰ / _{-0.040}	135 ^{+0.040} / ₀	0.050-0.165	100、120、150
CRB-140145-L	140 ^{+0.340} / _{+0.215}	145 ^{+0.165} / _{+0.090}	140 ⁰ / _{-0.040}	145 ^{+0.040} / ₀	0.050-0.165	100、150、180
CRB-150155-L	150 ^{+0.340} / _{+0.215}	155 ^{+0.165} / _{+0.090}	150 ⁰ / _{-0.040}	155 ^{+0.040} / ₀	0.050-0.165	120、150、180

CSB-FWB® 纤维缠绕轴承尺寸表(壁厚5mm) Standard specifications (wall 5mm)

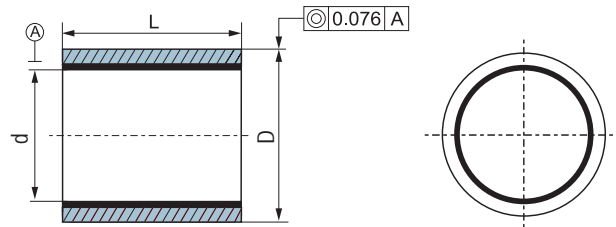
可供规格 Specifications:

产品编码 Part No.:

CRB-20 30-30

长度 Length
 外径 Outer diameter
 内径 Inner diameter
 材料 Materials:

CRM, CRB, CRG, CRH, CRP, CRW, CRF



长度公差表 Length tolerance table		L		
		≤75 mm	> 75 to < 150 mm	≥150 mm
d	≤75 mm	-0.50 mm	-1.00 mm	-1.50 mm
	> 75 to ≤120 mm	-1.00 mm	-1.00 mm	-1.50 mm
	> 120 to ≤150 mm	-1.00 mm	-1.50 mm	-1.50 mm

产品编码 Part No.	轴承尺寸 Bearing Size		推荐尺寸 Recommend		装配间隙 Assembly Interference	标准长度 Standard Length L
	内径 d	外径 D	轴 Shaft D _s h7	孔 Housing H7 D _h		
CRB-2030-L	20 ^{+0.200} / _{+0.120}	30 ^{+0.100} / _{+0.050}	20 ⁰ / _{-0.021}	30 ^{+0.021} / ₀	0.025-0.096	15、20、30
CRB-2232-L	22 ^{+0.200} / _{+0.120}	32 ^{+0.100} / _{+0.050}	22 ⁰ / _{-0.021}	32 ^{+0.021} / ₀	0.025-0.096	15、20、30
CRB-2535-L	25 ^{+0.200} / _{+0.120}	35 ^{+0.100} / _{+0.050}	25 ⁰ / _{-0.021}	35 ^{+0.021} / ₀	0.025-0.096	20、30、40
CRB-2838-L	28 ^{+0.200} / _{+0.120}	38 ^{+0.100} / _{+0.050}	28 ⁰ / _{-0.021}	38 ^{+0.025} / ₀	0.025-0.100	20、30、40
CRB-3040-L	30 ^{+0.200} / _{+0.120}	40 ^{+0.100} / _{+0.050}	30 ⁰ / _{-0.021}	40 ^{+0.025} / ₀	0.025-0.100	20、30、40
CRB-3545-L	35 ^{+0.200} / _{+0.120}	45 ^{+0.100} / _{+0.050}	35 ⁰ / _{-0.025}	45 ^{+0.025} / ₀	0.025-0.100	30、40、50
CRB-4050-L	40 ^{+0.200} / _{+0.120}	50 ^{+0.100} / _{+0.050}	40 ⁰ / _{-0.025}	50 ^{+0.025} / ₀	0.025-0.100	30、40、60
CRB-4555-L	45 ^{+0.230} / _{+0.130}	55 ^{+0.105} / _{+0.055}	45 ⁰ / _{-0.025}	55 ^{+0.030} / ₀	0.025-0.105	30、40、60
CRB-5060-L	50 ^{+0.230} / _{+0.130}	60 ^{+0.105} / _{+0.055}	50 ⁰ / _{-0.025}	60 ^{+0.030} / ₀	0.025-0.105	40、50、60
CRB-5565-L	55 ^{+0.245} / _{+0.145}	65 ^{+0.120} / _{+0.070}	55 ⁰ / _{-0.030}	65 ^{+0.030} / ₀	0.040-0.120	40、55、70
CRB-6070-L	60 ^{+0.245} / _{+0.145}	70 ^{+0.120} / _{+0.070}	60 ⁰ / _{-0.030}	70 ^{+0.030} / ₀	0.040-0.120	40、60、80
CRB-6575-L	65 ^{+0.245} / _{+0.145}	75 ^{+0.120} / _{+0.070}	65 ⁰ / _{-0.030}	75 ^{+0.030} / ₀	0.040-0.120	50、60、80
CRB-7080-L	70 ^{+0.245} / _{+0.145}	80 ^{+0.120} / _{+0.070}	70 ⁰ / _{-0.030}	80 ^{+0.030} / ₀	0.040-0.120	50、70、90
CRB-7585-L	75 ^{+0.275} / _{+0.175}	85 ^{+0.125} / _{+0.075}	75 ⁰ / _{-0.030}	85 ^{+0.035} / ₀	0.040-0.125	50、70、90
CRB-8090-L	80 ^{+0.275} / _{+0.175}	90 ^{+0.125} / _{+0.075}	80 ⁰ / _{-0.030}	90 ^{+0.035} / ₀	0.040-0.125	60、80、100
CRB-8595-L	85 ^{+0.275} / _{+0.175}	95 ^{+0.125} / _{+0.075}	85 ⁰ / _{-0.035}	95 ^{+0.035} / ₀	0.040-0.125	60、80、100
CRB-90100-L	90 ^{+0.275} / _{+0.175}	100 ^{+0.125} / _{+0.075}	90 ⁰ / _{-0.035}	100 ^{+0.035} / ₀	0.050-0.135	60、80、120
CRB-95105-L	95 ^{+0.310} / _{+0.185}	105 ^{+0.125} / _{+0.075}	95 ⁰ / _{-0.035}	105 ^{+0.035} / ₀	0.050-0.135	60、80、120
CRB-100110-L	100 ^{+0.310} / _{+0.185}	110 ^{+0.135} / _{+0.085}	100 ⁰ / _{-0.035}	110 ^{+0.035} / ₀	0.050-0.135	80、100、120
CRB-110120-L	110 ^{+0.315} / _{+0.190}	120 ^{+0.135} / _{+0.085}	110 ⁰ / _{-0.035}	120 ^{+0.040} / ₀	0.050-0.140	80、100、120
CRB-120130-L	120 ^{+0.340} / _{+0.215}	130 ^{+0.165} / _{+0.090}	120 ⁰ / _{-0.035}	130 ^{+0.040} / ₀	0.050-0.165	100、120、150
CRB-130140-L	130 ^{+0.340} / _{+0.215}	140 ^{+0.165} / _{+0.090}	130 ⁰ / _{-0.040}	140 ^{+0.040} / ₀	0.050-0.165	100、120、150
CRB-140150-L	140 ^{+0.340} / _{+0.215}	150 ^{+0.165} / _{+0.090}	140 ⁰ / _{-0.040}	150 ^{+0.040} / ₀	0.050-0.165	100、150、180
CRB-150160-L	150 ^{+0.340} / _{+0.215}	160 ^{+0.165} / _{+0.090}	150 ⁰ / _{-0.040}	160 ^{+0.040} / ₀	0.050-0.165	120、150、180